

<b>CONTENT</b>	<b>PAGE</b>
I. HOME .....	2
1.1 Message from Head, Culture and Tourism Bureau .....	2
1.2 Events .....	4
1.2.1. World Tourism Day .....	4
1.2.2. The True Cross /Maskel/ .....	7
1.3 News.....	8
1.4 Speeches .....	9
1.5 Tourism Facts & Figures .....	11
1.6 Publications .....	12
II. ABOUT US .....	13
2.1. The SNNPRS .....	13
2.1.1. Location, Area and Administrative Divisions.....	13
2.1.2. Population and Ethnicity .....	13
2.1.3. Climate .....	14
2.1.4. Topography .....	14
2.1.5. Wildlife Conservation Areas .....	15
2.1.6. Infrastructure .....	15
2.2. The Bureau .....	17
2.2.1. Vision, Mission & Principles .....	17
2.2.2. Duties & Responsibilities.....	18
2.2.3. Organizations .....	18
2.2.4. Services .....	19
III. CULTURE.....	20
3.1. Culture Overview.....	20
3.2. The People .....	21
3.3. Historic & Cultural Heritages.....	22
3.3.1. Monasteries & Churches .....	22
3.3.2. Mosques .....	22
3.3.3. Stelae .....	23
3.3.4. Defense Wall & Caves .....	24
3.3.5. Paleo-anthropological Sites .....	24
3.4. Intangible Heritages .....	25
3.4.1. Oral Traditions .....	25
3.4.2. Social Practices .....	26
3.4.3. Traditional Handicrafts .....	26
3.4.4. Traditional Arts.....	28
3.4.5. Indigenous Knowledge & Practices .....	28
3.5. World Heritage Sites .....	29
3.5.1. Tiya Stelae .....	29
3.5.2. Lower Omo Anthropological Site.....	29
3.5.3. Konso Cultural Landscape .....	29
IV. NATURE.....	32
4.1. Nature Overview .....	32
4.2. National Parks.....	32
4.2.1. Nech-Sar National Park (NNP) .....	33
4.2.2. Mago National Park (MNP): .....	36

## **Bureau of Culture and Tourism Website Compiled Information by Girma Timer**

4.2.3.	Omo National Park (ONP) .....	38
4.2.4.	Chebera-Churchura National Park (CCNP): .....	41
4.2.5.	Maze National Park (MzNP): .....	44
4.3.	Arba-Minch Crocodile Ranch .....	47
4.4.	Wildlife Reserve .....	48
4.4.1.	Chelbi Wildlife Reserve .....	48
4.4.2.	Tama Wildlife Reserve .....	48
4.5.	Controlled Hunting Area (CHA) .....	49
4.5.1.	Murule Controlled Hunting Area.....	49
4.5.2.	Welishet-Sala Controlled Hunting Area .....	50
4.6.	Sanctuary (Sinkile).....	51
4.7.	Community Based Wildlife Conservation Area .....	51
4.8.	Important Bird Areas (IBAS) .....	52
4.9.	Forest.....	53
4.10.	Wildlife (Mammals, Birds, Plants, others).....	54
4.11.	Water Bodies .....	54
4.11.1.	Rivers and Lakes.....	54
4.11.2.	Waterfalls (Cascade) .....	55
4.11.3.	Cold and Hot Springs .....	56
4.12.	Landscape/Topography .....	56
4.12.1.	Mountains .....	56
4.12.2.	The Great Rift-Valley .....	57
4.12.3.	Lower Omo Valley .....	57
V.	TOURISM.....	58
5.1.	Overview Tourism.....	58
5.1.1.	Foreign tourism .....	58
5.1.2.	Domestic tourism.....	59
5.1.3.	Ecotourism.....	60
5.1.4.	Agro-tourism .....	60
5.2.	Tourism Destinations .....	60
5.2.1.	Actual Destinations (Arba-Minch, Karat, Jinka, Hawassa, Dilla, Butajira...) .....	61
5.2.2.	Potential Destinations (Worabe, Hossana, Sodo, Durame, Kulitu. Tercha, Mizan, Masha, Bonga, Ameya, Soyama, Kele, Fofa, Gedole, Laska ) .....	77
5.3.	Tourist Travel Circuits (Maps) .....	96
5.4.	Investment Opportunities .....	99
5.5.	Visitors Flow and Income .....	100
5.6.	Community Participation .....	102
VI.	CONTACT US .....	103
VII.	PARTNERS.....	104
VIII.	GALLERY .....	105

## I. HOME

### 1.1 *Message from Head, Culture and Tourism Bureau*

*On behalf of the Regional Bureau of Culture and Tourism, it is my great pleasure to welcome you to the lands of diverse culture and nature through our official website (southtourism.gov.et).*



*The SNNPRS is one of the Federal Regional States of Ethiopia endowed with diverse natural, cultural, and historical resources. The Region is well known for its abundant actual and potential tourist destinations in the country. It is unique in taking up the highest diversity of nations, nationalities, and peoples. Each of them has their own colorful culture, language, norms, and life styles together with the diverse oral traditions, social practices, traditional crafts, arts, indigenous knowledge, and other living expressions. The Region has rich tangible historic & cultural heritages including the ancient monasteries, mosque, stelae, paleo-anthropological sites. Moreover, two of the eight world heritage sites of the country: Tia and Lower Omo anthropological sites found in the Region indicating the outstanding international value of Region's heritages. There are also two more universally important historic & cultural sites, which are in the process and proposed to be World Heritage Sites: the **Konso Cultural landscapes and Gedeo Agro forestry system**, for their better protection and development. The former (**Konso Cultural landscape**) management plan and nomination file has completed and pending its final declaration by UNESCO.*

*Owing to the unique geographical variations (rugged landscapes, mountains) associated with the Great Rift Valley and its Lakes as well as the numerous Rivers and streams; the Region is endowed with wide spectrum of wildlife resources. The wildlife resources of the Region mainly restricted in seven National Parks, two Wildlife-Reserves, one wildlife Sanctuary and six Controlled Hunting Areas as well as 10*

## **Bureau of Culture and Tourism Website Compiled Information by Girma Timer**

*Important Bird Areas. There are also different recently established community based wildlife conservation areas which are managed by the community themselves.*

*It is my desire that all tourists to enjoy the special things that the Region has to offer. Tourism is a growing industry and has gradually become as one of the foreign exchange earner in the Region and the country. This is mainly due to the continuation of peace and stability in the country and continuous government commitment to provide enabling environments for the sector development*

*Looking the tourism potential of the Region, investing in the tourism industry is becoming very attractive with aggressive marketing and diversification of source markets. There are many investments opportunities in and around attraction-sites of the Region related with services rendering facilities and infrastructure development. Accordingly, the Bureau would like to invite interested investor to be involved in the development of tourist accommodation including hotels, restaurants, pension, lodges, Eco-lodges, luxury tented camps, cottages,. Moreover, there are enormous opportunities in the area of film production, recreation, and entertainment as well as facilitation in the area of conference tourism.*

*I would like to aware you that Potential investors are highly encouraged to be involved in the tourism development through direct investments or joint ventures with Ethiopian entrepreneurs. The Bureau has a strong believe that such investment interventions would have paramount importance to change the rich wealthy for social & economic development and make certain sustainable tourism development in the Region.*

*The Region has a lot to offer, invest, and derive benefit using the untapped rich resources through promoting sustainable tourism.*

*Almaz Beyero*

*Head of Culture and Tourism Bureau of SNNPRS*

### **Address**

***SNNPRS Culture & Tourism Bureau at Hawassa, the capital of the Regional State***

***Telephone: 251-046-221-04-80/ 220-84-90***

***Fax :251-0462205197***

***PoBox: 1078***

***E-mail:***



## 1.2 Events

### 1.2.1. World Tourism Day

World Tourism Day commemoration was established at the third session of the General assembly of the United Nations World Tourism Organization (UNWTO) held in Madrid Spain in 1979. It has been commemorated on and around 27, September of every year by appropriate events based on the theme chosen by the General Assembly, on recommendation of UNWTO's Executive Council. This date was chosen to coincide with an important landmark in world tourism: the anniversary of adoption of the UNWTO statutes on 27 September 1970.



World Tourism Day logo of 2009

The main purpose of World Tourism Day is **to foster awareness among the international community on the importance of tourism and its social, cultural, political and economic values.**

Since the practical commencement of World Tourism Day celebration in 1980, the day is celebrated every year in one selected country at international level as well as in each member countries at national level. Ethiopia has become a member country of UNWTO in 1987 and since then World Tourism Day has been celebrated at National level in the country. Formerly, the Day used to be celebrated only in Addis Ababa. Recently, the Ministry of Culture and Tourism has decided to consider the Regional States of the country to host the National World Tourism Day celebration turn by turn instead of attending it only in Addis Ababa. Accordingly, the 29<sup>th</sup> World Tourism Day (or the 21<sup>st</sup> at the National level) celebration was jointly organized in Oromia and Gambella Regions at the National level for the first time under the theme “Tourism Respond for the Challenge of Climate Change.”

The 2009 World Tourism Day is its **30<sup>th</sup> (in the world) and 22<sup>nd</sup> anniversary in Ethiopia** was chosen to be celebrated in SNNPRS at the National level, which is one of the richest Region in terms of cultural and natural diversity in the country as well as in East Africa. The year World Tourism Day celebrated

**Bureau of Culture and Tourism Website Compiled Information by Girma Timer**

under the year theme “**Tourism - Celebrating Diversity**” The theme focuses to alert the importance of diversity for the development of tourism over the world.



World Tourism Day celebration in Arba-Minch forest hall Nech-Sar National Park

Among the Federal Regional States of the Country, the SNNPRS highly match up and properly respond to the year World Tourism Day theme: “**Tourism-Celebrating Diversity.**” The Region is home for more than 56 Nations Nationalities and People that have their own language, culture, norm, and life styles. It was because the region holds rich diversity of culture and nature that the Federal Culture and Tourism Minister had chosen the National World Tourism Day celebration to be held in the SNNPRS from 27 September to 2 October 2009 for one week.



His Excellency SNNPRS president, Excellencies Minster and Minster Deta of Culture and Tourism attending Panel discussion in the event held at Hawassa

## **Bureau of Culture and Tourism Website Compiled Information by Girma Timer**

The 22<sup>nd</sup> National World Tourism Day of Ethiopia was celebrated in different towns and traveling long distance within the SNNPRS. Ministers, higher officials of the Federal Regional States of the country and other invited guests (Stakeholders) and journalists had attended the events traveling and visiting the various cultures of Nations Nationalities and People as well as the dramatic natural wealth of the region.

The tour covers a circle that has a total distance of 1188 km with in the Region and had passed through eight Zones including Guraghe, Silte, Hadia, Kembata Tembaro, Wolyta, Gamogofa, Gedeo and Sidama and three Special Woredas/Districts/ namely; Konso, Burji and Amaro.as well as made its final venue in the Regional capital Hawassa town.

During the events, attractions like Tia and Tuitifela Stelae, Haroshetan creator lake, Ajora falls, Maze National Park, Nech-Sar National Park, the Great Rift Valley Lakes (Chamo & Abaya), Konso, Burji, and Amaro cultural landscape and Gedeo Cultural Agro forestry & historical sites as well as various cultural practices of the different Nations Nationalities have been visited. Besides, panel discussions, food festivals, different sport competitions were also undertaken and made memorable the events.



Visit on lake Chamo (Arba-Minch) and Tutifola Stelae site (Gedeo Zone) on World Tourism day



## **Bureau of Culture and Tourism Website Compiled Information by Girma Timer**

### **1.2.2. The True Cross /Maskel/**

Maskel, one of the top most holidays, is colorfully celebrated in most parts of the Regional State. The majority of the Nations, Nationalities, and People found in the region accompanies the holiday with traditional holiday songs. In most Nation's Nationalities and People of the Region, the festivals last about 15 days preparing various types of traditional delicious foods and the people enjoys itself with customary singing and dancing in open filed with in their respective villages. A lot of people of the different Nations nationalities and people, who are living in towns, travel to rural area to stay and celebrate the Maskal festivals with their relatives and rural communities. People of Guragehe, Woliyta, Gamo(Dorze), Dawro, Kaffa, Hadiya, Kembata-Tembaro, who are living in major towns of the country regularly returned back to their birth place in September to celebrate the Meskal holiday with their relatives and the rural communities. The event is also very important for youngster to find and engage their future partners .

### **1.3 News**

**World Tourism Day (Ethiopia Tourism Day)  
(Monday, September 28<sup>th</sup>, to Sunday, October 4<sup>th</sup>, 2009)**

All went to south of Ethiopia (SNNPRS) for the year's national world tourism day celebrated from September 28<sup>th</sup>, to October 4<sup>th</sup>, 2009. This year national World Tourism Day celebrated in SNNPRS. The celebration opened at one of the world heritage site, Tiya stelae in Gurahge Zone. The traveller visited many parts of the Region (Zones & Special Woredas) during the event. The trip started from Tiya Stelae site via Butajira, Worabe (Siltie Zone), Hosanna (Hadiya Zone), Durame (Kembata Tembaro Zone), Sodo (Wolayta Zone), Maze National Park, Nech-Sar National Park, Chenha & Arba-Minch (Gamo-Gofa Zone), Konso, Burji, and Amaro Special Woredas and continued to Gedeo Zone (Yirgachefe, Dila), Sidama Zone (Yirgalem) and culminate in Hawassa (Capital city of SNNPRS) on 4<sup>th</sup>, October 2009. The theme for this year World Tourism Day is "Tourism- celebrating Diversity." Other than adding to the role of globalization, environmental and cultural sustainability, the theme also aims to shed light on the most human side of the industry- its capacity to build understanding, foster social inclusions, and promote higher standards of living.

**SNNPRS, Bureau of Culture and Tourism First Assembly**

(Tuesday, 12<sup>th</sup>, 2009)

The SNNPRS, Bureau of Culture, and Tourism conducted the first sectoral general assembly. The aims of the forum was to listen and discuss the first half year planned activities achievement report, the next 2<sup>nd</sup> half activity plan as well as to provide a platform for the staffs to interact with each other and exchange ideas. The one-day event held in the Regional Finance Bureau meeting hall, on Tuesday 12<sup>th</sup>, 2009 at Hawassa. The Region Culture and Tourism Bureau of Heads, experts and all heads and experts of Zonal and special woredas Culture, Tourism, and State communications as well as coordinators of the National Parks attend the assembly. The Assembly was presiding over by w/r Almaz Beyero Head of Culture and Tourism Bureau of the Regional State with her opening and closing remarks.

## **1.4 Speeches**

**Speech by Ato Shiferaw Shigute President of the Southern Nations Nationalities and People Regional State (SNNPRS) at the final Day of World Tourism week held on Sunday, 4th September 2009 at Pina Hotel, Hawassa**

---

**His Excellencies Ambassador Mohamed Drir Minister of Culture and Tourism Ministry**

**Her Excellencies W/r Tadelch Dalocho Minister De'ta of Culture and Tourism Ministry**

**Federal and Regional States higher officials represented here,**

**Members of the Press,**

**Distinguished Guests**

**Ladies and Gentlemen:**

Today marks the culmination of a successful and eventful week which we have focused national attention to tourism potential in the country and particularly in SNNPRS.

I believe that within the past six days of travel, the people of this Region have found again how well gifted they are in terms of tourism attractions including cultural, historical and natural as well as the products thereof. I also believe that many members of the community now aware what each one of them should do to protect, develop, and wisely utilize the resources as well as get economical benefit from the growing tourism industry in the country.

This year world tourism day theme “**Tourism-Celebrating Diversity**” highly harmonizes with the context of our Region. As the name of the SNNPRS indicates, the Region is ‘a home of diversity’ talking up more than 56 nations’ nationalities and people and each of them has their own colorful culture, language, norms, and life styles together with the diverse oral traditions, social practices, traditional crafts, arts, indigenous knowledge, and other living expressions. The Region is also endowed with wide spectrum of wildlife resources protected in seven National Parks, two Wildlife-Reserves, one wildlife Sanctuary and six Controlled Hunting Areas as well as 10 Important Bird Areas. It is fortunate that the Region holds rich diverse resources, which are the bases for the development of tourism industries for the benefits of the people and the country as a whole.

The Regional government has given strong attention to safeguard the cultural historical and natural resources of the Region and change it for social and economic development through promoting sustainable tourism development. That is why, now we have decided to restructure and establish a separate culture and tourism bureau considering the vast nature of activities as well as the role of this thriving sector to the Region’s development.

**Ladies and Gentlemen**

## **Bureau of Culture and Tourism Website Compiled Information by Girma Timer**

Currently, the domestic tourism industry sector is gradually developed and we now have more Ethiopian people taking up traveling as part of their lives and involved in various tourism investments in both small and large-scale enterprises in the Region.

This World Tourism week visit is very important to us because it will no doubt generate increased interest of people in our tourism products and would create a very good opportunity for the development of tourism investment and domestic tourism in the Region. People can easily share experience in this event and furthermore create an opportunity to know our diverse, kind, & hospitable people and promote the various tourist attractions sites that the Region has to offer. As you, all know international tourism is very important in interim of hard currency earnings but it is very sensitive related with external influence (insecurity) such as global terrorists' threats or natural disasters, which commonly affect international tourist arrival. Conversely, domestic tourism can withstand such threats supporting the industry from harsh conditions.

In conclusion, I would like to appreciate the Federal Ministry of Culture and Tourism for the selection of the SNNPRS to host the year national world tourism week. Undoubtedly, the SNNPRS is a home of diversity, which can properly, responds to the meaning of this Year World Tourism Day theme i.e. "Tourism-Celebrating Diversity", as well as satisfy the needs of all traveler attending the various events organized by eight Zones, three special woredas and Hawassa town (the capital city of the region) of the Region.

I wish to thank all those who have ensured that we have very successful events of National World Tourism Week

I thank you!

**Bureau of Culture and Tourism Website Compiled Information by Girma Timer**  
**1.5 Tourism Facts & Figures**

Tourists (Domestic & foreign) arrival and income generated for the last 10 years in SNNPR

Year E.C.	Nationals	Foreigner	Total	Revenue in Birr
1992	48740	12634	61374	5122769
1993	77886	10126	88012	7571518
1994	102270	20000	122270	7002006
1995	101000	22000	123000	7007116
1996	102135	41871	144006	6424337
1997	94358	29395	123753	8663100
1998	200000	38814	238814	12262000
1999	338915	32215	271130	12739995
2000	336185	57347	393532	23852410
2001	257489	75375	332863	26379639.82



## **1.6 Publications**

Different documents and informations of the Regional States Culture and Tourism Buraeu are attached here for down loading. These include:

1. Tourist service rendering institution (Hotels, lodges, penisions, Resturants, Tour operators)
2. Major Towns facilities
3. Different agreements with partners
4. Survey Reports
5. Proclamations, Regulations and Guidelines
6. Brochuers
7. Agreement with partners
8. Lists of wildanimals (Mammals, Birds, Fishes, reptiles and Amphibians, Plants)

## II. ABOUT US

### 2.1. *The SNNPRS*

#### 2.1.1. Location, Area and Administrative Divisions

The Southern Nations, Nationalities and People's Region (SNNPR) is located in the Southern and southwestern part of Ethiopia. Astronomically, it roughly lies between 4°.43' - 8°.58' North latitude and 34°.88' - 39°.14' East longitudes. It is bordered with Kenya to the south, the Sudan to southwest, and Gambella Region to the northwest and surrounded by Oromiya Region to northwest, north, and east directions.

The total area of the Region is 110,931.9 Sq.Km which is 10% of the country and inhabited by a population size of about 15,760,743 (in 1999E.C.) - accounting nearly 20% of the total population of the country. The population density of the region becomes 142 persons per sq.k.m, which makes the region one of the most populous parts of the country.

The region is a multination, which consists of more than 56 ethnic groups with their own distinct geographical location, language, cultures, and social identities living together. These varied ethnic groups are classified in to the Omotic, Cushitic, Nilo-Sahara, and Semitic super language families. Among which Omotic and Cushitic are the most populous and diversified ones with the largest area coverage in region respectively. Based on ethnic and linguistic identities of the people the region is at present divided into 13 zones-sub-divided in to 126 Woredas and 8 special Woredas .which again divided into 3678 rural Kebeles. Regarding urban areas there are 22-town administration and 114 certified towns with municipal city status totally having 238 urban Kebeles

#### 2.1.2. Population and Ethnicity

Since the 1994 census, the population of the region is estimated to grow at an average rate of 2.9% per annum. Based on this estimation, the region population was 15,336,328 of which 7,626,840 were males & 7,709,489 were females in 1999 E.C. This indicates that the percentage share of females is relatively high. In addition to this about 91.3 % of the population resides in rural areas and only 8.7 % in urban.

The data indicated that there were 3,249,102 households in the region with an average of 4.7 persons per household. Further, the projection shows that there are about 282,721 households with an average of 4.6 persons per household in urban areas, and 2,966,382 households with an average of 4.7 persons per household in rural areas.

Ethnic identity is another important attribute of a population. The region is a host of more than 56 ethnic groups with their own distinct language, cultures, beliefs, traditions, rituals, norms, values, and social identities living together. These diversified ethnic groups belong to Omotic, Cushitic, Semetic, and Nilo

## **Bureau of Culture and Tourism Website Compiled Information by Girma Timer**

Sahara super linguistic families. Out of these, Debu Omo has 16 distinct ethnic groups belong to the four linguistic families. Next to that Benchi-Maji which has 6 distinct ethnic groups belong to Omotic and Nilo-Saharan linguistic families followed by Gamo Gofa (with five distinct ethnic groups belong to one linguistic families Omotic). Among Special Woreda, Derashe has 5 distinct ethnic groups belong to Cushitic linguistic families.

### **2.1.3. Climate**

**Rainfall:** The amount, duration, and intensity of rainfall in the region vary considerably. It generally decreases from west and northwest to southeastwards. The main dry season is shorter in the southern part. Conversely, the main rainy season is larger in southwest and in south parts of the region. The past three decades rainfall data show that the mean annual rainfall of the region was ranging from the lowest about 400 mm in the extreme south of Debu Omo zone to over 2200 mm in the west in Sheka and Kaffa zones. The lowest rainfall is experienced in parts of Debu Omo Zone such as Salamago, Bena-Tsemay, Dassench and Hamer Woredas, and in the low lands of Bench-Maji Zone (Omo National Park). On the other hand, highest rainfall values are recorded in Masha woreda of Sheka Zone. Generally, in the western part of the region the rain occurs all the year round while it is bimodal in the eastern and southern part of the region.

Relying on the reliability of rainfall for crop production and duration of growing periods, the three seasonal pattern of rainfall in the region experienced Bega (December, January, and February.) provide little rain for limited part of the region, Belg (March, April) the amount of rainfall received is relatively lower than the Kiremt rainfall that occurred in June, July, August. However, in each of the seasons the rain may begin earlier/later and lasts before the usual time. This has impact on growing period and reliability of rainfall.

**Temperature:** The mean annual temperature of the region varies from less than 10°C in the extreme highlands to the east /parts of Sidama highlands/ to over 27°C in the lowlands to the south in the Omorate plain /Debu Omo zone/.

However, temperatures are generally high in the region with little variations among seasons. The Meteorological data of 2007 indicate that the mean annual maximum temperature of the region ranges for 31°C in Demeka station of Debu Omo zone to about 21.7°C in Butajira station of Gurage zone. On the other hand, the mean annual minimum temperature roughly varies from 11°C in the high lands of Siltie zone to about 18.4°C in the stations of lowland Gamogofa & Dawro zones and Konso Special Woreda.

### **2.1.4. Topography**

The region is a land of outstanding natural beauty with high mountains, steep valleys and rolling plains. The most remarkable land features of the region are the Great Rift Valley that runs along the eastern edge

## **Bureau of Culture and Tourism Website Compiled Information by Girma Timer**

of the region and the Omo valley, which is the major feature of the region that roughly cuts in to two halves. A series of highland complexes are found Along the Omo River Valley: such as Kaffa, Konta and Gofa high lands are the prominent examples.

The altitudinal variation of the region extends from the lowest point at-Lake Roudolf (Turkana) 376m above sea level to Mount Guge of Gamo-Gofa highlands which is 4200m above sea level.

### **2.1.5. Wildlife Conservation Areas**

The diverse climate, topography, water, and forest resources of the country have provided a wide range of environments for supporting great varieties of faunas and floras. So far 277 species of mammals and 847 species of birds have already been distinguished, of which 7(seven) species of mammals and 16(sixteen) species of birds are peculiar to Ethiopia. In the SNNPR as the ecology, permits more than 150 species of mammals and about 600 species of birds have been registered within the wildlife conservation areas of the region. The region encompasses seven National Parks, two Wild life Reserves and six Controlled Hunting Areas as well as one wildlife Sanctuary.



Arial Photo of Tiang (Megala Qorqi) from Omo National Park

### **2.1.6. Infrastructure**

**The road Network:** At the end of 1999 E.C. the region has a total of road length of 7,955.7 KM. Out of which 633.1 Km is asphalt and the remaining 2,262.2 Km is federal gravel and 2,578 km is regional gravel..

**Telephone service:** Nowadays telephone services are expanding in the region. There are four types of telephone services, namely: digital, automatic digital, semi automatic, and pay stations. Totally 150

## **Bureau of Culture and Tourism Website Compiled Information by Girma Timer**

telephone stations are found in the towns of the region; from which 17 are semi automatic, 73 are digital and 59 are pay stations (almost Vsat).

**Postal service:** Although the establishment of fast electronic communication systems through internet and telephone are overwhelming; currently there are about 90 towns having different level postal services. When one can see the overall service; two district post offices are found in Awassa and Arbaminch city; while 16 post offices, 18 departmental post offices and 54 sub-post offices are found distributed in all Zones and Special Woredas of the Region.

Most of the postal services are agents and sub post offices deliver services. Although there exists a shift to electronic communication system, in places or situations telephones are utilized there is a need to improve the infrastructure.

**Electricity:** It is one of the modern sources of energy used as a source of power in industries, in residents, and as a fuel replacing wood and cow dung. The regional distribution of electric service can be seen in both inter-connected system and self-contained system /generator/.

In the Region 273, towns and villages have electric service provision though interconnected system and diesel generator supplied by Ethiopian Electric Power Corporation. On the other hand, 10 towns have fixed-time diesel power supply through public participation indicating that more than 96.3% of towns in the region are electrified through inter connected system.

## **2.2. The Bureau**

The Bureau of Culture and Tourism is responsible for conservation and development of the Region cultural, historical, & natural diversity in order to change the great-wealth for social & economic development through facilitating sustainable tourism for the development and prosperity of the Region in particular and the country as a whole.

We are proud to work in such active and challenging sector, and are delighted for the Region position as one of the leading destinations in the country for our extraordinarily diverse cultural, historical, and natural heritages.

It is our responsibility to provide assistance and support to our customers (visitors, investor, conservationist, researchers, the tourism sectors like tourist service providers, tour operators and tour associations etc) and our fellow Ethiopians.

### **2.2.1. Vision, Mission & Principles**

The Bureau of Culture & Tourism is responsible for the conservation and development of the Region cultural, historic and natural resources and to facilitate sustainable tourism.. This mandate is derived from various policies, proclamation and regulations set by the Federal & Regional government. These Acts include Federal Culture Policy, Environmental Policy, Wildlife Policy, Environmental Impact Assessment Proclamation No 299/2002 , Culture and heritages Protection Proclamation and Regulation and Wildlife Development, Conservation & Utilization proclamation No 541/2007 and regulation No 163/2008

**Vision:** to have well conserved, developed and treasured Cultural, Historical & Natural heritages and make the Region the top most tourist destinations of preference as well as leader in the sustainable tourism development in east Africa.

**Mission:** to conserve and develop the Region cultural historical & natural resources and facilitate sustainable tourism for the Region and National development and prosperity.

**Principles:** to accomplish its mandate, following the vision and achieve its operation the Bureau will be guided by the following Principles:

- Integrity, Transparency and Accountability in all operations,

## **Bureau of Culture and Tourism Website Compiled Information by Girma Timer**

- Quality service delivery (customers & result oriented)
- Good organization and effectiveness in resource utilization
- Innovation and creativity
- Good leadership with strong staff team spirit
- Professionalism in the sector

### **2.2.2. Duties & Responsibilities**

The Regional Culture and Tourism Bureau have the following duties and responsibilities:

1. Protect, develop, study and promote the Region culture, cultural heritages, arts and language
2. Expand the Region tourism industry such as arts, culture, cinema and theatrical enterprises; provide technical capability certification for investor, associations who need to be involved in the sector ; renew or terminate the license up on close supervision
3. Protect and develop the Region Nations, Nationalities, and People history, culture including registration of heritages which are not listed by UNESCO
4. Responsible to eradicate harmful traditional practices as well as conduct awareness raising program to defend social discrimination
5. Collect and register tangible and intangible heritages found in the Region and provide the required maintenance.
6. Establish the Region Tourism Development Fund and Council of Tourism
7. Study National parks, other wildlife areas as well as other natural attractions found in the Region, demarcate, protect, and develop newly surveyed wildlife areas based on their conservational value and economical profitability.
8. Design strategies and put in to practices to benefit local communities from the development of attractions found around their area;
9. Establish and manage museums and cultural cluster that displays the culture , language, history and heritages of the Region Nations Nationalities and people
10. Collect revenue generated from National Parks, protected areas as well as other tourist attractions sites administrated by the Region; manage and develop them.
11. Establish and manage wild animals ranches which are found important for tourism marketing
12. Provide standards for tourist rendering facilities found in the region
13. Put into practice any other measures which are important for the execution of its authority and responsibilities

### **2.2.3. Organizations**

## **Bureau of Culture and Tourism Website Compiled Information by Girma Timer**

According to the new Business Process Re-engineering (BPR) program implemented in the Region and the country the Bureau has organized by two and eight **Core processes** and supportive processes, respectively.

### **The Core process of the Bureau includes:**

1. Cultural Development and Research Core Process
2. Tourism and Parks Development and Utilization Core Process

The supportive Process are :

1. Finance, Purchasing and Property Administration
2. Human Resources development and management
3. Preparation of Development Planning and Follow up
4. Information & Communication Technology(ICT) and information documentation
5. Public information and communication
6. Human Resources information and statistical supply
7. Internal Auditor and
8. Gender and HIV AIDS

At Zonal, Special Woredas and Woredas level the sector organized together with State communication process, known as State Communication, Culture, and Tourism Department, and seconded to the Regional level Culture and Tourism Bureau and State Communication Bureau as well as to the respective core process and supportive process. The coordination office of National Parks and Arba-Minch Crocodile ranch seconded to the Region Tourism and Parks Development and Utilization Core Process.

To gain knowledge of duties & responsibilities of the Core Process & supportive process at the Region level as well as Department and coordination offices at the Zonal, Special Woredas and woredas ([please click-here](#)).

### **2.2.4. Services**

- Provide information for our customer's such as tourists, researchers, tour operators, investors and Ethiopian fellows
- Provide, renew and terminate license for those who are involved in business related with culture, arts, and theatrical arts industries and nature conservations as well as tourist service render facilities.
- Provide awareness raising training to capacitate different stakeholders (Hotels, tour operators, local guides, local communities etc)
- Provide technical capability certification for investor, associations who need to be involved in the sector; renew or terminate the license up on close supervision



### III. CULTURE

#### 3.1. *Culture Overview*

As the name indicates, Southern Nations Nationalities and People Regional State (SNNPRS) is one of the Federal Regional States of Ethiopia endowed with a remarkably rich cultural diversity. This diversity is followed with the existence of 56 Nations Nationalities and People (70% of the country). The Region holds diverse tangible and intangible cultural & historic heritages with both traditional and modern cultural expressions, languages, norms and centuries old know how in handicraft production. The intangible heritage of SNNPRS is extremely rich with an exceptional variety including diverse oral traditions, social practices, traditional crafts, performing arts, indigenous knowledge, and other living expressions



Cultural House of Gamo in Chenecha

The Region is very well known for its diverse tangible historic & cultural heritages including Monasteries, Mosque, Megalithic Stelae, Paleo-anthropological & anthropological sites. Moreover, two of the eight Ethiopia's cultural and historical heritage sites (Tia and Lower Omo anthropological sites) are listed by UNESCO as World Heritage Site (in 1980) indicating the outstanding universal value of Region's heritage. There are also two more universally important historic & cultural sites, which are in the process and proposed to be listed by UNESCO as World Heritage Sites: the Konso and Gedeo Cultural

### **Bureau of Culture and Tourism Website Compiled Information by Girma Timer**

landscapes, for their better protection and development. The former (Konso Cultural landscape) management plan and nomination file has already completed and expected its final declaration by UNESCO. Besides, the Great Rift Valley, Omo valley and the Region diverse landscape as a whole is further represented by numerous religions including Christianity, Islam, and other traditional religions, which peacefully coexist demonstrating the strong social unity of the Region.

Appropriate protection and conservation of these assets would enable the Region to change the rich wealthy of cultural and historical assets for sustainable social and economic development for the benefits of the local communities, the Region, and the country as a whole.

The Ethiopian government constitution recognizes promoting pluralism and the right of all ethno-linguistic communities to protect and promote their culture, language, and cultural & historic heritages. Recently, the government restructured to establish a separate ministry for culture and tourism considering the role of this sector to the country's development. Similarly, the SNNPRS has upgraded and organized the sector to Bureau level..

The Regional government (the Bureau) has given strong attention to safeguard the cultural. Historical and natural resources and ensure sustainable development in the Region.

### **3.2. The People**

**Nationalities :** the SNNPRS is one of the Federal Regional States of the country known for its extraordinarily rich diversity of people, inhabiting more than 56 distinct Nations, Nationalities and Peoples that have their own culture, language, norms and lifestyle and thus the Region has assumed a name “museum of nationalities” .

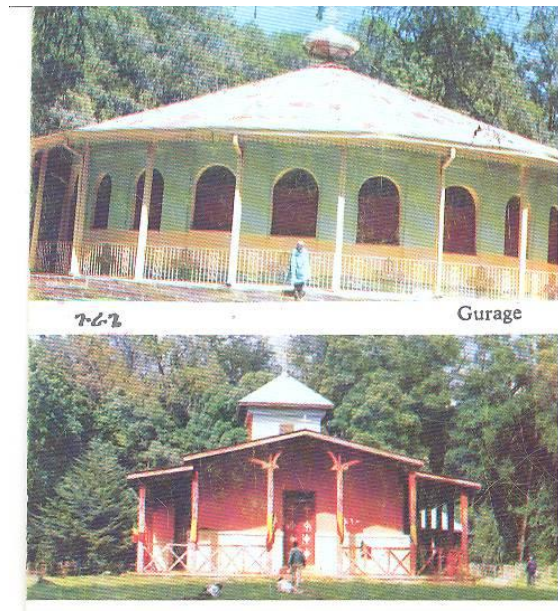
According to the Ethiopian government constitution : “Nations, Nationalities or People”...is a group of people who have or share large measure of a common culture or similar customs, mutual intelligibility of language, belief in a common and related identities, a common psychological make up, and who inhabit an identifiable, predominantly common territory.

**Language:** the different ethnic groups inhabiting in the Region speaks as many languages and dialects from all the four major language groups (Omotic, Cushitic, Semitic, and Nilo-Saharan) used in the country. The region is unique in possessing these entire four-language groups specially the Omotic language mainly spoken in the SNNPRS. In the Region there are 28 ethnic groups who speak and have origin of Omotic language group, 19 Cushitic, eight Nilo-Saharan and two Semitic (**click language & nationalities of SNNPRS** for more information).

### 3.3. Historic & Cultural Heritages

#### 3.3.1. Monasteries & Churches

The SNNPRS has different religious **ancient Monasteries and Churches**. Most of the Ortodox Churches ark of tabernacles came from the northern parts of the country and built on the top of hills & Mountains. Currently, Muhur Eyesus & Midre-Kebid Abo monasteries are using as an educational center of the Ethiopian Orthodox Churches in Guraghe Zone. “Birbir Mariam monastery”, Eli St. Gabriel and Dorze Giorgis Churches in Gamo-Gofa, Tocha Medahnialem & Isera-Bale St. Michael churches in Dawuro , Sheapa St. Gabriel, Beha St Giorgis Anderach Medahni-Alem and Shapa Catholic Church of St. mary in Kaffa, Shisha and Qiye Mariam Curches in Sidama Zone and Yero Medahni-Alem monastery in Amaro Special Woreda are among others some of the oldest churches/ monasteries in the Regional State.



Midre-Kebid (uper) & Muhur Eyesus Abo monasteries

These historic religious churches and monasteries have many important and historic religious written documents and materials or church relics. The recently built Chuchu Gabriel Church in Dila , Gedeo Zone and Hawassa St. Gabriel church are magnificent & elegant in their architectural make up.

#### 3.3.2. Mosques

### **Bureau of Culture and Tourism Website Compiled Information by Girma Timer**

There are different historical religious sites of the Muslim communities in the Region. These include the earliest Tongola Quba mosque of Kaffa, the Alkeso and Haji Alye Mousque of Silte, the Qatbare, Aberaet & Zebemola Mosques of Gurage Zone. All these mosques are ancient and actual religious domestic tourism sites. The recent Nur-Ahmed of Alaba, Mosques of Butajera and Dila are the well-known actual religious tourism sites & recent in their architectural design. There are also many traditional worship sites in the different zones of the Regional State.



### **3.3.3. Stelae**

The SNNPRS has an enormous number of Megalithic stelae. There are about 10,000 stelae in the Southern Region. One of these stelae sites, the stelae site of **Tiya** in Gurage zone, registered as world heritage site. Most of the stones are engraved with enigmatic symbols, notably swords.



Tutit Stelae site Gedeo Zone

The other known stelae sites **Tutufola, Tutit and Socoro sodo stelae sites** found in Gedeo Zone.: **Tutufola** is probably one of the most impressive sites contain about 80 ancient stelae which are variously carved with facial feature, phalluses etc. indicating the brave or sex of the person buried underneath.



## **Bureau of Culture and Tourism Website Compiled Information by Girma Timer**

**Tutiti** lies on the hill 2.3km from the village of Chelba. It consists of some very large, tapering, generally un-carved standing stones with marking grave. These stelae are found in Wenago, Yirgachefe, and Gedeb Woreda of Gedeo zone, respectively. There are also other old stelae in Sidama, Wolita, Silte zones & Yeme Special Woreda of the Region.. The stelae are of two shapes: one with cylindrical shape, which represents male sex organ while the others are flat with engravings. These stelae attracted the interest of many archeologists and visitors.

### **3.3.4. Defense Wall & Caves**

Caves are found in different places of the Region on the sides of cliff, near by springs and in the middle of thick forest. The most amazing caves include Moche-Borago and Akirsa of Wolita Zone, Diabeten cave of Bench-Maji ,Wollo-Shola Cave of Kaffa, Bandelicho & Batena caves of Hadya, Dawa Cave in Kembata-Timbaro and Shekshko cave in Sheka Zone. **There are also** five rock art sites in Gedeo Zone

**The Dawro Zone Defense wall is called the wall of Halala (or Halala kela)** a long historical defensive wall constructed during the period of king Keti Halala in between 1764-1789. The stone wall was built to protect Dawro's frontiers from the outside invaders, this stone rampart covers about 170 km in length. This historical ancient heritage of the zone has a great attention for its protection and tourism development in the Region.



King Halala wall of Dawro Zone

### **3.3.5. Paleo-anthropological Sites**

**There** are different Paleo-anthropological and anthropological sites in the lower Omo River Basins in South Omo Zone, Konso and Burji Special Woredas of the Regional State. The lower Omo Paleo-

## **Bureau of Culture and Tourism Website Compiled Information by Girma Timer**

anthropological site is registered as the World Heritage site. The Shungura, Usno & Mursi and Kibish formations are found within lower-Omo. The other Paleo- anthropological sites includes Fejej and Weyto Achiqere formation (in South Omo zone) found east of Omo river, Konso(in Konso Special Woreda), Burji Kilicho (in Burji Special Woreda). These sites are very important in the study of Paleo-environment and mammalian evolution. The sites are very rich with vertebrate fossils of late Oligocene and Pleistocene.

The three most important and known Paleo anthropological and anthropological sites of the Region include

1. Shungura (lower omo), Usno, Mursi, Kibish, Fejeje, and Weyto-Anchiqere in South Omo Zone are recognized by UNESCO as world heritages.
2. Burji soyama ( Burji Special Woreda )
3. Konso Pale anthropological site (Konso special woreda )

### **3.4. Intangible Heritages**

Intangible Cultural Heritage means the practices, representations, expressions, knowledge, skills – as well as the instruments, objects, artifacts and cultural spaces associated therewith – that communities, groups and, in some cases, individuals recognize as part of their cultural heritage.

This intangible cultural heritage, transmitted from generation to generation, is constantly recreated by communities and groups in response to their environment, their interaction with nature and their history, and provides them with a sense of identity and continuity, thus promoting respect for cultural diversity and human creativity.

The cultures of the peoples of the various Nations Nationalities and Peoples of the Region hold diverse intangible heritages, which incorporate their varied social, political, administrative, moral, religious, and psychological conditions. The languages, history, oral tradition, housing, instruments of production, food preparation, eating habits, customs, ornamentation, aesthetic values and preparation, beliefs and religious practices, are also components of their Intangible culture. The peoples of SNNPR have diverse & colorful culture in their life style, body decoration, dressing, wearing jewelries and way of life. Each of the nationalities of the region has their own, wedding, burial, religious, and other cultural ceremonies. Some of the nationalities known of their special cotton cloths weaving and dressing, making bracelets, nickels, earrings, and bead. The impressive stone and wood curving techniques, the stone walled villages, the Moras, the Olayats and Wakas very well known living cultural practices of the unmixed unique Konso nationality culture.

#### **3.4.1. Oral Traditions**

## **Bureau of Culture and Tourism Website Compiled Information by Girma Timer**

Following the diverse ethnic groups and language found the SNNPRS; numerous oral traditions have been practiced including folktales, proverb, riddle, and legends. These intangible heritages are very well known & practiced specially by the elders of the respective ethnic group in the different occasions such as, in-group discussions, meeting. For example , folktales and proverbs have been used by many of ethnic groups in communal gathering and discussions to endorse statement and opinions, to compromise ideas, redirect the course of discussion and to spice up speech and validate ones own view. Although oral traditions have been used in different occasions, many community members especially, the youth seems to know little /or fail to use it/ about the various oral traditions. .

Efforts have been under way to safeguard and transmit the various oral traditions through measures like recording, systematic collections and documentations, publishing and distributions, awareness rising through the youth and use of mass media.

### **3.4.2. Social Practices**

There are diverse social practices among the diverse ethnic groups found in the region. These include: Rituals & festive events: (“Fiche” new year festival, Meskel, Araffa, moulid), burial ceremony, naming, marriage, funeral, self help association or ‘Edir’, men & women dressing style, tournaments(Donga, Fattening, Gabata and other cultural games), conflict resolution mechanism, traditional reconciliation, sacrifice, various rite of passage, hairstyle, new-year, traditional jurisdiction (Yejoka Kicha), and other.

The region has a plentiful culture and language particularly high ethnic diversity is found in the South Omo Zone of the region where there are more than 16 ethnic groups ( Mursi, Surma Nagatom, Karo, Ari, Dassench, Bodi, Arbore, Hamer, Bena, Kaugu, etc). Each of these ethnic groups has their own culture, unique & appreciable lifestyle, reflected by their hair style, body decoration, dressing, wearing jewelry, and ways of life as well as wedding, burial & religious and other cultural ceremonies. Besides, their musical instrument & the dancing styles also vary from one ethnic group to another group. Particularly, the colorful & dramatic traditional ceremonies such as the Ritual stick fighting of Mursi & Surma ethnic-groups locally called Donga /. The “ Bull-Jumping” ceremonies by Hammers are fascinating events.

### **3.4.3. Traditional Handicrafts**

The people of SNNPR is a remarkably rich with centuries old know how in handicraft production. Each of the different ethnic group has indigenous knowledge creating diverse traditional handicrafts for various purposes.

The Dorze people in Gamo Gofa zone is very well known for their traditional **weaving practices**, though the skill is wide spread to different parts of the Region & the country. Weavers produce different cloths for men, women, & children.



Traditional Weaving practices in Dorze Gamo-Gofa Zone

**Pottery** is an old tradition of many communities of the different ethnic group and it is still being practiced in the region.



Pottery

**Metalwork:** Blacksmiths have different naming in the different ethnic groups. The skill of metalwork acquired through observation & practice. Both men and women and children as an assistance involved in the work in many communities. Metalwork involves various steps; Fire is kindled then the metal is hammered and given the final form. The blacksmith make knives, sickles, axes, hatchets and ploughs, among others tools.

**Woodwork:** traditional wood workers prepare different agricultural tools (mofer, kenber) wooden bowls, beehives, chair, stools, bed, and hencoops. **Waka, a wooden sculpture**, is produced by traditional wood curving techniques of Konso people .

**Bamboo work:** it has been common practice of many highlander communities to use bamboo trees for various needs in the region. The skill is acquired through observation and practices. Mostly both men and women (in some only men) make materials( flutes, granaries, baskets, beehives, storages, chicken pen, house partition & walls, floor cover, fences, etc, ) from bamboo.



## **Bureau of Culture and Tourism Website Compiled Information by Girma Timer**

**Basketry: Basket making** is a part of most ethnic group women's occupations (life) in the Region. The skill is acquired through observation and practices i.e making items from grass. Baskets items have various services & it is produced either for personal use or for sales (means of income for women).

**Tanning:** a few families of many ethnic groups do traditional leatherwork (tanning) over generations. Leather workers perform their work near the river /water and in their compounds. They prepare beds, seats; blow fans horse seats, bags, traditional wear, footwear, drums& lyres. The knowledge of the practitioners contributes much for the society.

Effort have been under way to safeguard, develop and make marketable the various artisans products by documenting, preserving and practicing the know-how and the tradition as well as encouraging and supporting artisans through various measures like training, marketing and technological innovations.

### **3.4.4. Traditional Arts**

The ritual ceremonies related to birth and other festive events, wedding, communal working, funeral, religious ceremony, coronation/ enthronement (**Konso & Timbaro**), praise, holiday and mourning songs are some of the common traditional arts/songs/ among others that prevailed among the different ethnic groups in the different occasions in the Region. Besides, several types of music, dance and theatre are known in the region. These traditional arts emanate from kinship, neighborhood and other types of community relationships through generations. Each of the songs type has their own significances in each community. For example:

**Work songs** are performed to encourage people to work hard & with more enjoyment and to lighten the mood and enhance group bonding especially during communal/collective/ labour.

**Wedding song:** play pivotal role in strengthening social relationships. It provides the youth with an avenue to express love for their chosen one and provides entertainment for the community. **Click here** for further information of traditional art in SNNPR.

### **3.4.5. Indigenous Knowledge & Practices**

The diverse ethnic groups of the Region hold numerous indigenous knowledge & practices concerning nature and the universe. The traditional calendar systems, traditional medicines, traditional fishing practices, farming practices on terraced land, mixed crop productions, cultural agro forestry, crop storage system, propagation and false banana plantations, traditional house/hut/ constructions, are among others common traditional knowledge and practices of the Region people.

## **Bureau of Culture and Tourism Website Compiled Information by Girma Timer**

**Calendar:** Many of the ethnic groups of the region have their own traditional calendar system which is mainly used for the respective community to identify what kind of economic & social activities would be performed at specific time of the year, traditional fishing practices.

### **3.5. World Heritage Sites**

#### **3.5.1. Tiya Stelae**

The Stele site of **Tiya** in Gurage Zone is registered in the UNESCO world heritage list as world heritage sites in 1980. The site contains more than 40 ancient stelae. The largest of which stands up to 3.9m high. They form only one cluster and are intriguing and mysterious. Almost nothing is known about the monoliths carves or their purpose. Most of the stones are engraved with enigmatic symbols, notably swords. French excavations have revealed that the stelae mark mass graves of individuals aged between 18-30 years old.



. Tia Stelae Gurage Zone

#### **3.5.2. Lower Omo Anthropological Site**

The lower Omo Paleo-anthropological sites are registered in UNESCO world heritage list as the World Heritage in 1980. The most important and known sites for Paleo-anthropological study: Shungura (Between 3.3-0.8 million years ago), Usno & Mursi (about 4.1 mya), Kibish (younger sediments), formations. All these formations are found within the lower-Omo in South Omo Zone.

#### **3.5.3. Konso Cultural Landscape**

The cultural properties including the traditional stone wall towns (Paletaa), ward system (kanta), Mora (cultural space), the generation pole (Olayta), the dry stone terracing practices (Kabata), the burial marker (Waka) and other living cultural practices are reasons for the precipitation of the Konso cultural

## **Bureau of Culture and Tourism Website Compiled Information by Girma Timer**

landscape to be listed on UNESCO world heritage sites list. All the necessary requirements have completed including, field studies, data collections, nomination file/document and management plan of the Konso Cultural Landscape.

**Terrace:** The Konso have adapted a terrace agricultural system and the core Konso area is characterized by extensive dry stone terraces. These terraces retain the soil from erosion and create terrace saddles that are used for agriculture. The terraces are the main features of the Konso landscape and the hills are contoured by the dry stone terraces that could reach at some places up to 5m high. The terraces retention walls are built with heavier blocks at the base. The saddles that are prepared for agriculture are between four and eight meters wide at most places.



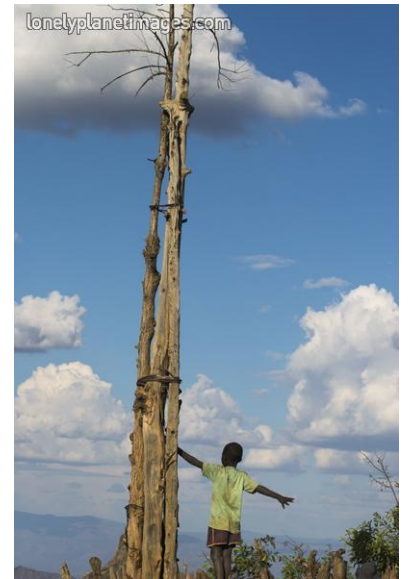
Agricultural terracing practices in Konso Special woreda

**The walled town (Paleta):** The Konso live in dry stone walled towns (Paleta) located on high hills selected for their strategic and defensive advantage. The Konso villages remarkable for the beauty and simplicity of its workmanship, constructed entirely from natural materials, cultivated or constructed from the surroundings. The village is ringed by dry stonewalls, at least a meter thick and three meters high.

**Mora:** Cultural space of Konso located at the center of the main central enclosure and at different locations within the walls, and sometimes outside the walls. Paths from all gates lead to these Moras. The individual walled town (Paleta) has up to 17 Moras, which are connected to one other by footpaths. The Moras retain an important and central role in the life of the Konso. They usually have one or two-story grass thatched houses, called Pafta. The Mora comprise an open sided sitting area beneath a huge thatched roof with a heavy wooden ceiling and above the ceiling there is therefore an 'attic' the ground floor of the Mora is expertly paved to form a public area where the men gather to govern the village life. It is also a place for recreation, the youth may gather here to play chat and relax during the day when they are not working. The attic of the Mora meanwhile is where all the adult men are obliged to sleep at night. They

## Bureau of Culture and Tourism Website Compiled Information by Girma Timer

have a responsibility to protect the villages from various an expected incidences such as fire and any other attack.



### Konso Mora and Generation pole

**Waga:** Konso people are notable for the erection of wagas, memorial stelae to a dead man who has killed an enemy or wild animals such as lion or leopard. These stylized wooden carvings are arranged in groups, representing the man, his wives, and his vanquish adversaries.

#### **Cultural properties constituting the Konso Cultural Landscape are:**

- 1. The traditional stone walled towns (Palettea) and their organization and associated cultural properties including the Kanta (Ward system), Mora(Cultural space), with its men house (Pafta), Generation marker tree (Olayta), erected stones (Dagahela and Daga-diruma)**
- 2. The dry stone terrace( kabata), used for water and soil conservation**
- 3. The traditional maintained grooves (forests) which serve as a refuge for many endemic plants**
- 4. The burial marker statuettes (Waka) made of wood and unique to Konso people**
- 5. the ponds (Harda)**
- 6. The active traditions of Konso (erecting stelae)**

## IV. NATURE

### 4.1. *Nature Overview*

The diverse climate and topography of the Region have provided a range of natural environment supporting a wide spectrum of biological diversity with some endemic, endangered, and globally threatened flora and fauna. The existence of vast wildlife resources /diversity/ is a reflection of the Region unique geological history, diverse physical and climatic conditions, abundant water, forest resources, and vegetation cover.

The wildlife resource of the Region is mainly restricted in Wildlife Protected Areas, Namely: seven National Parks, two wildlife Reserves, six Controlled Hunting Areas and 10 Important Bird Areas as well as different Community Based Wildlife Conservation Areas. These Wildlife-Protected Areas cover an area of 27232 km<sup>2</sup> (24 % of the Region). So far, 150 mammals (46% of the country) and 600 birds (65% of the country) have recorded together with some endemic, near endemic and/or globally threatened species. The distribution of wild animals is associated with presence of diverse vegetation including savannah grassland, bush land, mountain forest, and riverine association. The highest concentration of wildlife resources /and diversity/ in the Region is observed around the Lower Omo Valley.

### 4.2. *National Parks*

There are seven National parks in the Region five of them are functional (Chebera-Churchura, Mazie, Mago, Nech-Sar and Omo) and the remaining two (Gibe-Shelqo and Loka Abaya) are under establishment. Inventory and boundary demarcation of the latter two newly discovered National Parks have already completed. The remaining task is establishing the area as a national park these may include constructing headquarter, second command post and recruiting the required human resources like park warden, technical & supportive staff and wildlife scouts. It is expected, that by the year 2003 E.C. both parks will start their practical conservational work.

**Management:** currently, the management of the national parks have undertaken either by the Ethiopia Wildlife Conservation Authority (EWCA) or by the SNNPRS Culture and Tourism Bureau Tourism and Parks Development & Utilization Process (SNNPRS-CTB-TPDUP). Accordingly, the SNNPRS-CTB-TPDUP had managed Nech-Sar and Omo National Parks until the end of June 2009. Recently, the management of both parks have been transferred to EWCA based on the new proclamation **No/.....wildlife** conservation and utilization proclamation for their better management of the rich biological diversity and dramatic natural scenery of the parks.



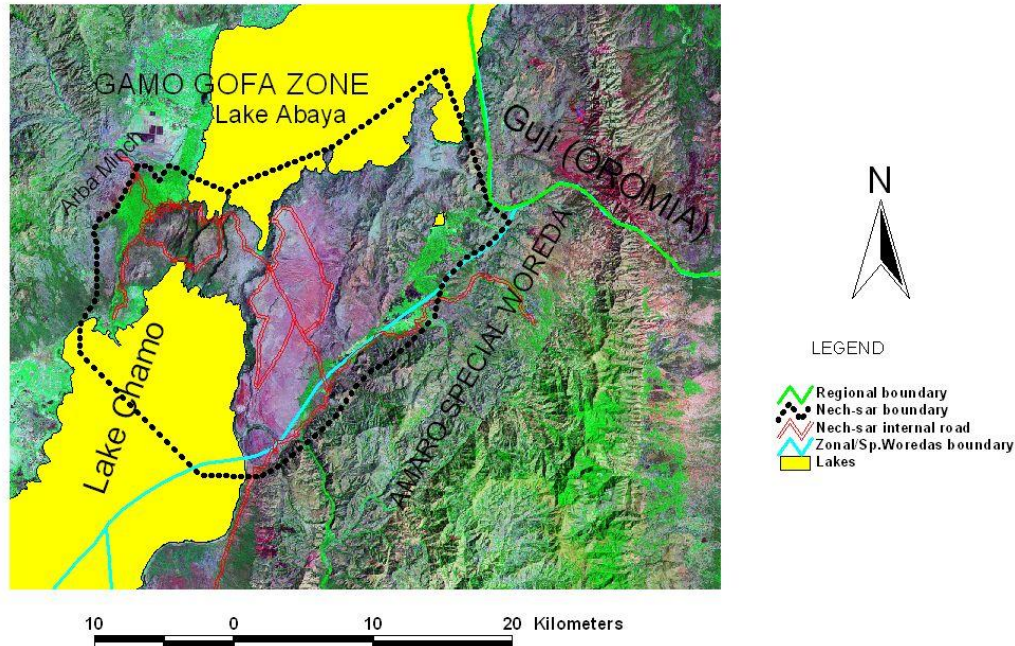
## Bureau of Culture and Tourism Website Compiled Information by Girma Timer

The SNNPRS-CTB-TPDUP manages the remaining National Parks (Chebera-Churchura, Maze and Mago) as well as the Arba Minch Crocodile Ranch. Each of these parks has one coordinator, four supportive staffs, and three technical staffs together with 21 to 50 wildlife scouts. The park coordinator is directly seconded for the Region CTB- TPDUP. He is responsible to coordinate conducting the various conservation and developmental activities such as law-enforcement, wildlife management (habitat and species), ecological monitoring, infrastructure development, tourism and community development.. The Region TPDUP is responsible in planning the annual activities together with each park management, and allocating the required budget. The department periodically supervises and evaluates the achievement/ implementation/ of the planed activities. The department has also provided different supports, capacity building, recruiting human resource, purchasing, and supplying big materials available in the country and sometimes abroad.

### 4.2.1. Nech-Sar National Park (NNP)

**Location:** NNP is found in SNNPRS between the two Great Rift Valley lakes (Chamo & Abaya) near Arba-Minch town & located about 500 & 270km south of Addis Ababa and Hawassa, respectively.

## NECH-SAR NATIONAL PARK



**Drainage:** The Park is fortunate in possessing a number of rivers, streams & lakes (Abaya, Chamo and Haro Ropi Lakes) which are reason for the rich wildlife resources of the area. Kulufo River *originates* from the western highlands of the area and cross the western side of the park and feeds Lake Cahmo (the largest river feeding this Lake). Sarmele River rises from the eastern highlands of the Amaro Mountains

## Bureau of Culture and Tourism Website Compiled Information by Girma Timer

cross the eastern part of the park and mixed with Segen River out side the park, which go down together to Lake Chelbi /Estefani/ in Debubu Omo.



Hippopotamus of Lake Chamo and Burchel's Zebra of Nech-Sar plains

**Wildlife:** the NNP diverse habitats and vegetation types shelter for over some 104 small, medium, and larger species of mammals, 351 species of birds and 1000 species of vascular plants. **The park** is known for its beautiful natural scenery and varieties of mammals and avian species. Among mammals: Burchel's zebra, Grant's gazelle, greater kudu, waterbuck, Guenther's dik-dik, bushbuck, jackal, spotted hyena, leopard, lion, cheetah serval-cat, honey badger, gureza-coloubs, vervet monkey, olive-baboon, wild dog and caracal are common & conspicuous.

Among the avian the endemic Nech-Sar Nightjar and the globally threatened lesser-kestrel, lesser-flamingo and phalied-hARRIER are very well known. The park is very well-known for its good populations of the giant Nile crocodile population. Lake Chamo is the only site in the world to see the unique giant Nile crocodile population with herds of hippopotamus and congregation of waterfowls. The very well known crocodile market, where hundredth of giant Nile crocodile seen on the shore of lake Chamo (bask the morning and the late afternoon sun), Nech-Sar plains, the bridge of heaven (God), the Arba-Minch ground water forest and the forty springs and the two grate Rift Valley Lakes (Lake Abaya & Chamo) are typical features of Nech-Sar national park attracting many national and foreign tourists





Burchels' Zebera of Nech-Sar national Park

**Access:** The Park is 500km and 250 km from to the south of Addis Ababa and Hawassa, respectively. The road from Arba-Minch town (Sikela) to the park covers a distance of 1.5km. the park hav about 180km internal roads which leads to the different attractions sites of the park.



Tourists in Nech-Sar Lake Chamo view and Hippos

**Scenic Value:** the landscape of NNP is surrounded by Lakes from north and south by the chained Amaro Mountains to the east and by the escarpments of Arba-Minch town to the west.. The landscape is breathtaking and important for sustainable eco-tourism development. The following attractions are commonly visited by many national & foreign tourists and famous. These includes the forty springs, crocodile market, Arba-Minch ground forest, Arba-Minch Hot springs, the Bridges of God are attractions



found in the park.

Around the park: Crocodile ranch (one governmental & one private) , Guge mountains, Dorze landscape & cultural villages, Lake Chamo & Abaya and the cultural life and social & traditional practices of the surrounding people.

**Address**

**Nech-Sar National Park**

**Po. Box: 68**

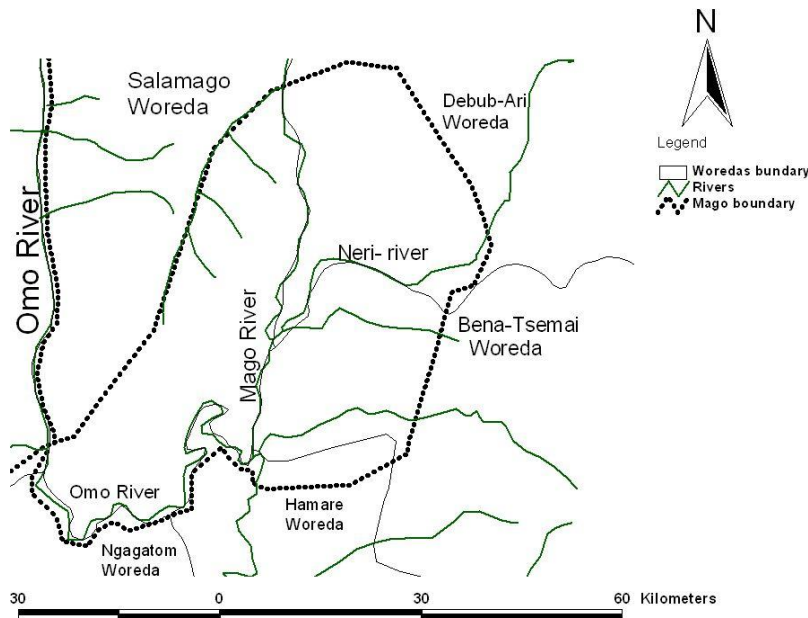
**Telephone: 0468840408/09**

**Arba-Minch**

**4.2.2. Mago National Park (MNP):**

**Location:** it lies on the eastern sides of a small branch of the eastern Rift Valley (Omo depression), in the South Omo Zone of SNNPRS and located about 530 and 800 km southwest of Hawassa and Addis Ababa, respectively.

**Figure: Mago National Park And surrounding Woredas**



**Drainage:** The Park is fortunate in possessing numerous rivers and streams, which are by far reasons for the rich wildlife resources of the area. Mago River rises from the northeast highlands of the area and cross the park (north to south) and feeds the Omo River (there are also different perennial rivers like Neri River and other streams, which are tributaries for Mago River in the park. Omo, Mago, and Neri rivers are typical features for the Mago National Park.

## **Bureau of Culture and Tourism Website Compiled Information by Girma Timer**

**Wildlife:** the Park supports a typical bush savanna fauna with 81 larger mammals & 237 species of bird. Among mammals: African elephant, buffalo, lesser-kudu, greater-kudu, duiker, warthog, tiang, lewel's hartebeests, Oryx, grant's gazelle, gerenuk, giraffe, cheetah, wild dog, lions, leopards, gureza, common baboon and verrevt monkey are common & conspicuous

**Access:** The Park is 800km and 500 km from to the south of Addis Ababa and Hawassa, respectively. The road from Jinka town to the park covers a distance of 34km all weather gravel road. The park has about 200km internal roads, which lead to the different attractions sites of the park.



**Scenic Value:** many national & foreign tourists in the Mago National Park commonly visit the following attractions. These includes the Hot Springs, Forest and savanna habitats, the topography (Murssi mountains and the different view points (Vantages over looking the park whole view) along the high way of Jinka-Murssi.

**Surrounding Community:** MNP area is also very well-known for its rich cultural diversity, where many elements of the earliest nomadic lifestyles are still continued. Hammer, Benna, Mursi, Ngagatom, Ari, Karo, Body, Kwegu are communities very well known for their traditional culture, lifestyles, colorful body decoration, ceremonies, festivals, rituals, and other living expressions

### **Address**

**Mago National Park**

**Telephone:**

**Mobile :0916856427(Park Warden)**

**Jinka**

### 4.2.3. Omo National Park (ONP)

**Location:** ONP is one of the largest and biologically rich National Parks in Africa found in SNNPRS of Ethiopia & located about 870 and 655km southwest of Addis Ababa and Hawassa, respectively.

**Drainage:** The Park is fortunate in possessing a number of rivers and streams which ultimately drains to Omo River. The name of the park derived after the famous river that passes following the eastern boundary of the park called Omo River.



Ostrich and African Buffalo in Omo National Park

**Wildlife:** Savannah, riparian formation and deciduous woodland constitute the major vegetation types of ONP. So far 325 species of birds and 75 species of mammals have been recorded. Eland, cheetah, elephant, black rhino, giraffe, buffalo, lion, leopard, lelwel hartebeest, tiang, Oryx, Burchell's zebra, Lesser kudu, de Brazzas monkey, common baboon and gureza, ostrich on the plains and the endemic black-winged love bird are among others typical features of ONP..





## Bureau of Culture and Tourism Website Compiled Information by Girma Timer

### Oryx and Ostrich of Omo National Park

**Access:** access is one of the great problems of Omo National Park due to lack of bridge over the Omo River. The road from Jinka to the bank of Omo river dry-weather road covering a distance of 85km and then need to cross the river using either local boat or Motorboat available in the station. After crossing the river, it is Omo National Park. From the bank of the river (the other side), need to drive some 30km to arrive the park head quarter called **Muei**. It is also possible to use the road from Adiss- Jima-Maji road (special better during the dry season) form the other sides of the park (west)

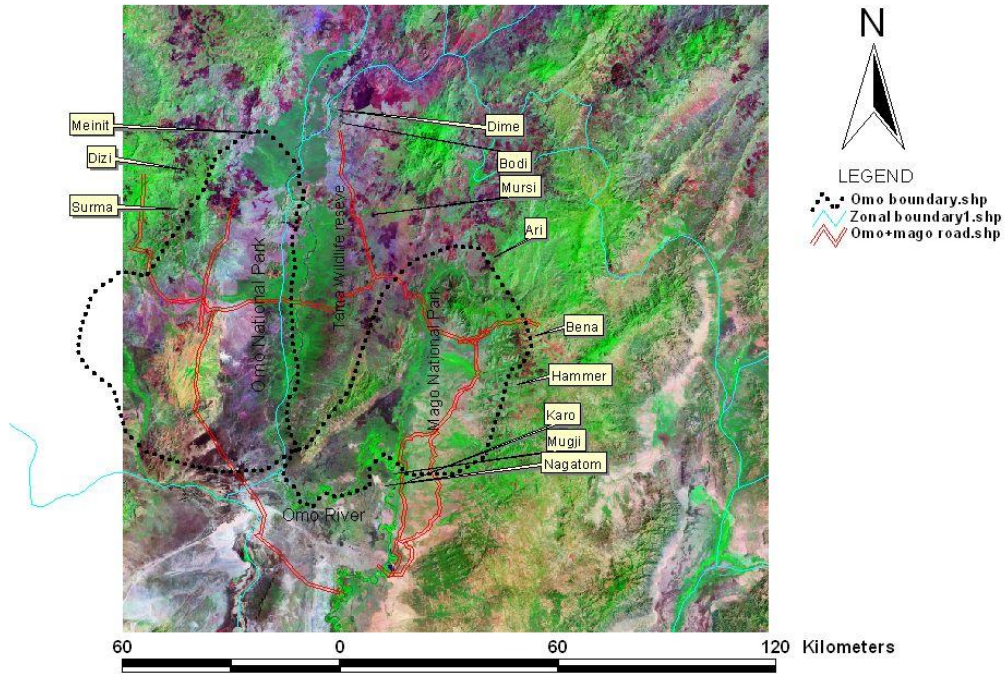
**Scenic value:** Omo National Park is one of the largest National parks in the country and covers an area of 4068 km<sup>2</sup> This Park is abundant with plant species, riverbank forests, savannahs, grassy plains, mountains, hillocks, & valleys. Beautiful landscape, Hot springs, different rivers, which feed the Omo River. Eland is one of attractive wild animals in Omo National Park. This animal is no longer in existence in other parts of the country roam in the park wilderness. The park is the last stronghold for wild life in Ethiopia and the only best wilderness site to see large herds of African Elephants & Buffalos, Elands, tiang, Hartebeests (lewelle), gazelle, Oryx, giraffe in the country. Besides, the area out side the park is also very breathtaking: the Adicus cloud forest of Maji Area, the beautiful landscapes, the bridges of God along the road to Adicus forest.



Arial photo of African Elephant in Omo National Park

There are also eight different ethnic groups living around the ONP who has their own culture, language, norm, lifestyles. These people have appreciable and untouched culture & traditional life style including lip plate & body coloration of Surma & Mursi people.

Omo-Mago National Parks and the surrounding communities



**Ethiopian Wildlife Conservation Authority**

**Po. Box**

**Telephone**

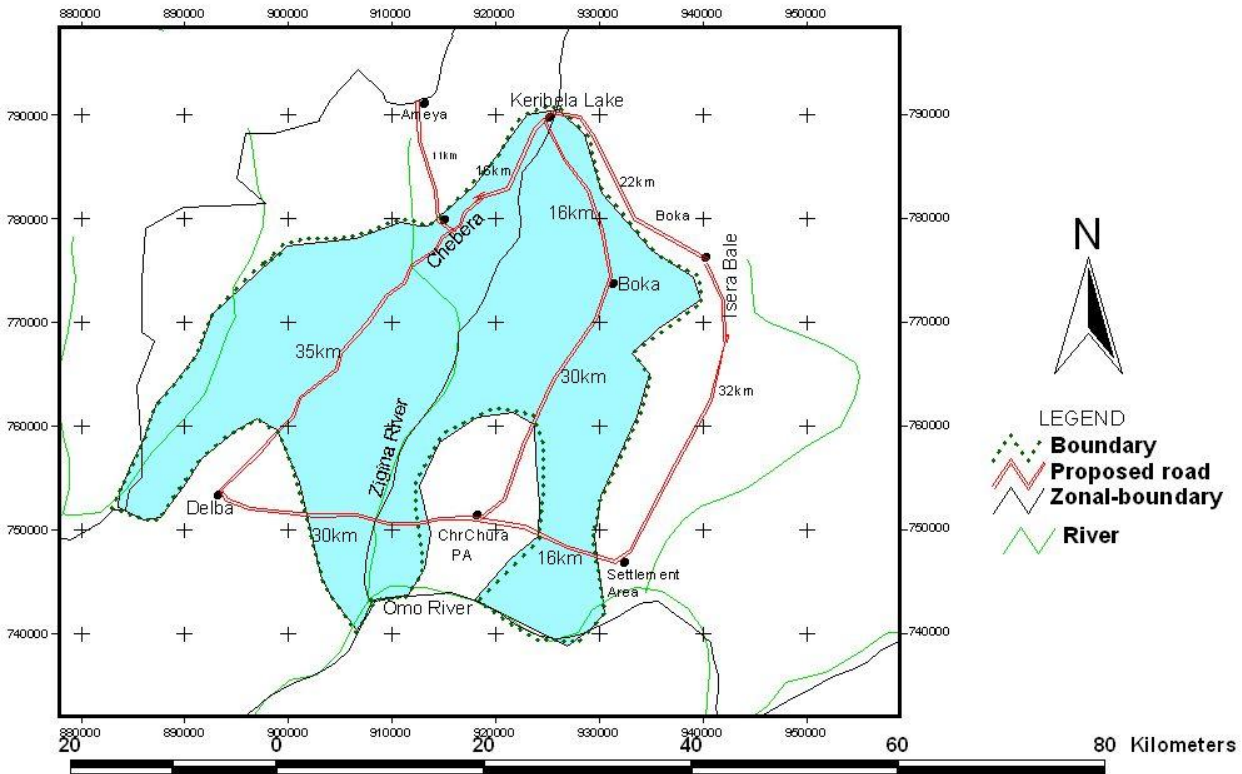
**E-mail**

**Addis Ababa**

**4.2.4. Chebera-Churchura National Park (CCNP):**

**Location:** CCNP is found within the western side of the central Omo Gibe basin, in between Dawro zone and Konta Special Woreda of the SNNPRS, Ethiopia. The park is located about 330 & 460 km southwest of Hawassa & Addis Ababa, respectively. It covers an area of 1215 km<sup>2</sup> that ranges in altitude form 700 to 2450 m.a.s.l..

**Chebera-Churchura National Park  
(iProposed Road in & around the park)**



**Drainage:** The Park is fortunate in possessing numerous rivers and streams and four small creator lakes (Keriballa, Shasho, Koka) which are reason for the rich wildlife resources of the area. Zigina River is rises from the north east highlands of the area and cross the central part of the park(north to south) and feeds the Omo River ( there are also different perennial rivers feeding Omo River crossing the park). Shoshuma River is rises from the northwestern highlands of the Konta area highlands cross the northeastern part of the park and mixed with Zigina River in side the park, which go down together to Omo River.





**Meka Forest in Chebera-Churchura National Park**

**Topography:** The prominent topographic features is unique & highly attractive and characterized by unique and highly heterogeneous and hilly terrain, few flat lands and highly undulating to rolling plains with incised river and perennial streams, valley and gorges.



### **Landscape of Chebera-Churchura National Park**

**Access:** access to arrive Chebera-Churchura National park is not a problem. One can reach to the park following either the Addis-Jima-Ameya road or Addis-Shashemene-Sodo-Waka-Tocha. The internal park road is under study however there is some 80 km rough dry weather road crossing the western sides of the park and show the entire park view or it is also possible to trek in side the park following foot paths available in the park but with help of local Guide.

**Wildlife:** So far, 37 larger mammals and 237 species of birds have been recorded in the different habitats (Highland & Rverine forest and savanna and bush lands) of the park. White-cliff chat, banded-barbet,

### **Bureau of Culture and Tourism Website Compiled Information by Girma Timer**

wattled ibis, black-headed forest Oriole and thick billed Raven are endemic birds for the country. Common mammals include the African elephant, hippopotamus, Cape buffalo, lion, and leopard. Currently, CCNP appears to be the least disturbed and reliable ecosystem for the African elephant and Buffalo in the country

**Scenic value:** This park is one of the relatively untouched, recently discovered and rich wilderness areas but the list visited and known park in the country. The park comprises unique and attractive mountain closed forest, closed tall-grassed savannah habitat, thick woodland forest. The landscape very fascinating highly rugged, undulating to rolling plains there a number of hilly & mountainous land which the whole year covered by vegetations. A number of cold & hot springs, historical caves, the Meka Forest (which is always with African Elephants). The park is the best site to see the African Elephants, and Buffalo..



Lake Kerebella and African Elephant in Chebera-Churchura National Park

The Park & surrounding area also has different natural and cultural attractions such as different hot and cold springs, lakes and caves.

#### **Address**

**Chebera-Churchura National Park**

**Telephone:0472270004**

**Mobile: 0913357056 ( Park Warden)**

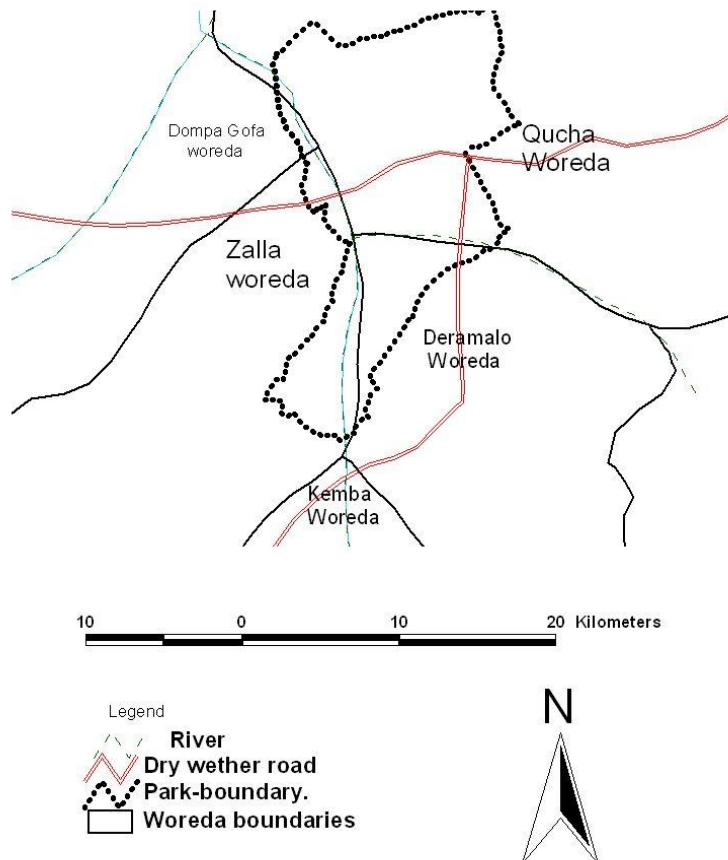
**Ameya**



#### 4.2.5. Maze National Park (MzNP):

**Location:** MzNP is one of the wildlife conservation areas known for its good population of the critically endangered endemic Swayne's Hartebeests population and located 460km and 235 south west of Addis Ababa and Hawassa, respectively, in Gamo-Gofa Zone.

**Figure : Map of Maze National Park and the surrounding woredas**



**Drainage:** The Park is fortunate in possessing a number of rivers and streams which ultimately drains to Omo River. The name of the park derived after the largest river that crosses the park called Maze River.

**Wildlife:** The Park is covered by savannah grassland with scattered deciduous broad leaved s trees as well as Riverine association along the main watercourses. The Wild animal of the MzNP supports a wide range of savannah species. So far 39 larger and medium sized mammals and 196 birds' species have been recorded. It is one of the three sites in the world where good population of the endemic Swayne's Hartebeest's population still survive. Besides, orbi, Bohor red buck, buffalo, warthog, bushbuck, waterbuck, greater kudu, lesser kudu, bush pig, Anubus baboon, vervet monkey, lion, leopard, wild cats,

serval cat are among others .common species.



The Endemic Swayne's Hartbeests in Maze National Park

**Access:** the road from Sodo to the park is all-weather gravel road covering a distance of 83km. It is also possible to use the road from Jinka to Betomela form the other sides of the park.

**Scenic Value:** the landscape of MzNP is surrounded by interesting high rugged mountain ranges, escarpment, and small hills. The landscape is breathtaking and important for sustainable eco-tourism development. The MzNP and the surrounding area have different natural, cultural and historical attractions such as Bilbo Hot Springs, Wenja Stone Cave, “Kaouwa Wella”(Yeniguse Warka),



**Bilbo Hot spring Maze National Park**

Bilbo/Halo Hot Spring: is situated at the upper parts of Maze River in the park It is a form of geyser, which shoot up hot water from deep inside the ground. The smoke released from this hot spring, cover wide area and seen from a distance. People from far areas and local people are using it as a traditional medicine.

Wenja Stone Cave: Natural rock cave that can hold up to 300 people. According to legends, in the past, the site was used to punish criminal/ unlawful member of the community.

Religious Site in Chosho Market: There are two oldest big trees in Chosho Market. These trees are believed as justice giving (court) by the locals' residence for any disagreement that may arise among them. The site is locally called "Kaouwo welloa" meaning the king's tree.

**Address**

**Maze National Park**

**Telephone:0468840411**

**Mobile: 0911090759 (Park Warden)**

**E-mail:mazenationalpark@yahoo.com**

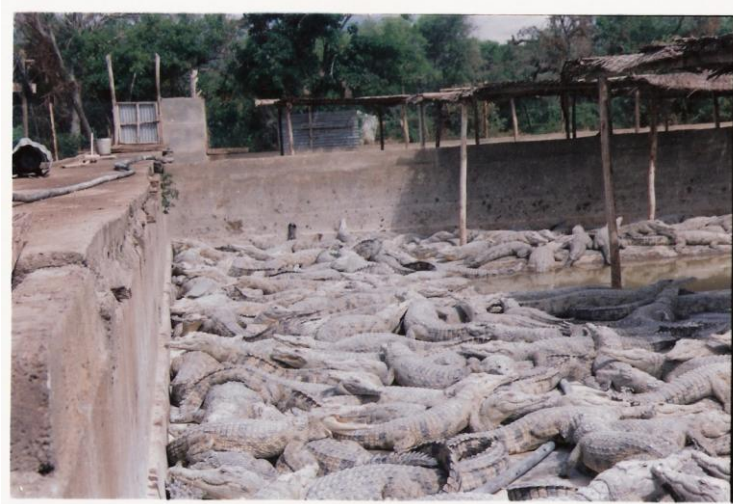
**Morka**

### **4.3. Arba-Minch Crocodile Ranch**

**Location:** Arba-Minch Crocodile Ranch is located 500km and 270 km south west of Addis Ababa and Hawassa, respectively, in Gamo-Gofa Zone. The Ranch is found near “Nechi-Sar” National Park in Arba Minch town on the shore of lake Abaya. The ranch was established in 1984 and it lies on an area of 3 hectare of land with the objectives

- a. To produce and export crocodile skins and meat to world market, and
- b. To contribute for the conservation of the globally threatened crocodile population

At present, the ranch is highly threatened by over flooding problem from Lake Abaya as a result the Regional Government allocate budget of five million Eth. Birr to relocate the ranch to another site.



Crocodiles in the pond of Arba-Minch Croc ranch

**Socio-economic importance of the ranch:** The ranch creates various job opportunities (temporary & permanent) to the dwellers of Arba-Minch town and its surroundings area. Besides, the establishment of the ranch attracts many foreign and domestic tourists in the area and it is one of the attractions being

## **Bureau of Culture and Tourism Website Compiled Information by Girma Timer**

reason for the development of Arba-Minch Town. Apart from developing crocodile hatchelling for the commercial purpose, the ranch releases a certain number of developed crocodiles to lake Chamo and Abaya contributing for the healthy population of crocodiles in the lakes.

### **Address**

**Arba-Minch Crocodile Ranch**

**Telephone: 0468840137**

**Arba-Minch**

## **4.4. Wildlife Reserve**

Wildlife reserve is one of the wildlife-protected areas designated for the conservation of wild indigenous flora and fauna where wild animals used the sites as a refuge during food and water shortage seasons. The conservation area is used for biological research and some controlled and sustainable local community resources uses. There are two Wildlife Reserves in the region, namely Tama and Chelbi Wildlife Reserve both located in South Omo Zone. At present, the Region Culture and Tourism Bureau TPDUP have a plan to convert these conservation areas to community based wildlife conservation areas in which the local community will own the land and managed by the community themselves.. Discussion was made with Tama wildlife reserve area local communities (Mursi & Bodi ethnic people) and local administrator in 2008 to convert the reserve to CBCA. It is hoped that Tama wildlife reserve will be converted to Mursi and Bodi land community based wildlife conservation area by the end of 2009

### **4.4.1. Chelbi Wildlife Reserve**

It is located in and around Chew-bahir (Lake Stefane or Chelbi) near the border of North Kenya. It covers an area of 4212km<sup>2</sup> along the drainage of Woito & Segen River which drains to Lake Stefane/ Chelbi. The reserve is known for the highly threatened Gravy zebra population found in the reserve. Besides one of the important birds area of Africa where a number of globally threatened water related birds species are known to occur. Three pastoral ethnic peoples or communities are known to occur in the reserve and surrounding area. Aerbore and hammer ethnic groups are the main stakeholders of the reserve.

### **4.4.2. Tama Wildlife Reserve**

It covers an area of 3269km<sup>2</sup> .It is found in Debub Omo Zone adjacent to Omo and Mago NPs. The reserve is very rich in wildlife resources besides large number of wild animals migrate in to this area from the neighboring parks especially during the dry seasons. .

**Wildlife:** Savannah, riparian formation and deciduous woodland constitute the major vegetation types of the reserve. Although systematic ecological study didn't conducted so far to determine the diversity and abundance of flora or fauna in the area, almost all mammals and birds species recorded in from both Omo

## **Bureau of Culture and Tourism Website Compiled Information by Girma Timer**

& Mago national Park exist in the reserve. Common mammals species of the reserve includes: cheetah, elephant, giraffe, buffalo, lion, leopard, lelwel hartebeest, tiang, oryx, Burchell's zebra, Lesser kudu, de Brazzas monkey, common baboon and gureza, ostrich on the plains and the endemic black-winged love bird are among others typical features of the reserve. .

Currently, the region culture and tourism Bureau wildlife conservation have a plan to convert the reserve to community based wildlife conservation area. There are to different community in and around the reserve Murssi & Bodi ethnic groups. These communities will own the Tama land and will manage the wildlife resource by them selves for the benefits of the community and the wildlife therein.

### **4.5. Controlled Hunting Area (CHA)**

CHA is one of the Wildlife Protected Areas where controlled hunting of hunt able wild animals under permit allowed. The Region has six different CHAs. These CHA usually located around National parks and Wildlife Reserve. Recreational Hunting in the CHA is carried out on a quota basis which would be given for the hunting safaris every two years after survey conducted by Federal and Region Tourism and Parks Development and Utiliaztion Core Proces(TPDP) to determine the population status of wild animals living in the hunting area.

Currently, six Controlled Hunting Areas are available in the Region. Out of these CHAs only two are functional and owned on concessions basis by the Ethiopian Rift Valley Safari. These hunting areas are located in Debub Omo Zone namely, Welishet Sala and Murule CHAs. The remaining CHAs ( include Boyo, Omo-West, Sheko-Bench and Segen are potential wildlife areas in the Region. Occasionally, hunting can be carried out under special permit in these CHAs. The sites are ready to be given for investors on concession bases to undertake controlled wild animals hunting for the benefits of the wildlife and the community living around. The Ethiopian Rift Valley Safari is the only company who operate hunting business in the Region. The company holds the two CHAs (Sala & Murule) on concession basis.

Tourist, who are coming for hunting recreation in these CHAs, have additional opportunities to enjoy the special scenic features of the Great Rift valley & Omo Valley National Parks, Lakes and Rivers. These include Nech-Sar, Omo, Mago, Maze and Chebera-ChurChura National Parks, Hawassa, Abaya, Chamo and Turkana Lakes and Omo River. Besides, the breathtaking diverse culture, traditional practices, & lifestyles of the indigenious people found in the famous Lower Omo valley namely: Hamer, Bena, Mursi, Surma, and Bodi among other who are living surrounding these Wildlife Protected Areas.

#### **4.5.1. Murule Controlled Hunting Area**

It is one of the functional CHA owned by the Ethiopian Rift Valley Safari on two year concession basis. Wild animals common in Murule CHA includes lesser kudu, Gerenuk, Guenther's dik dik, greater kudu,



## **Bureau of Culture and Tourism Website Compiled Information by Girma Timer**

tiang, bushbuck, warthog, defassa waterbuck, crocodile, serval, bush duiker, golden jackal, silver backed jackal, spotted hyena, klipspringer, anubis baboon, colobus monkey . The controlled hunting area covers an area of 900km<sup>2</sup> and bordered with Omo River and Mago National Park. Karo, Mugji, Ngngatom, Hamer communities are the main stakeholder who shared benefit from the activities and revenue generated from sport hunting.

Murule CHA has one lodge, which is located on the bank of River Omo. The lodge offer accommodation services, daily laundry, dining center for sport hunters and other visitors of wildlife and cultures of the surrounding community.

### **4.5.2. Welishet-Sala Controlled Hunting Area**

It is one of the functional CHA owned by the Ethiopian Rift Valley Safari on two-year concession basis. It is located northeast of Tama reserve or North of Mago National Park in south Omo Zone. The area is home to herds of Buffalo, Lelewel's hartebeest, defassa waterbuck, oribi, bush duiker, serval, greater kudu, caracal, warthog, hyena, lion, bushbuck, and Mountain reedbuck. The controlled hunting area covers an area of 500km<sup>2</sup> and bordered with Tama Wildlife Reserve and Mago National Park. Murssi people are the main stakeholder who shared full benefit from the activities and revenue generated from sport hunting.

**Shekobench:** this conservation area is found in Benchi-Maji Zone and located 1000 km from Addis Ababa. It covers an area of 5049km<sup>2</sup>. The area supports diverse smaller, medium, and larger mammal's species including elephant, buffalo, giraffe, lelewel Hartebeest, defassa waterbuck, oribi, bush duiker, serval, greater kudu, caracal, warthog, hyena, lion, bushbuck, monkey and other lowland mammals and birds.

**West Omo:** this conservation area is found in Benchi-Maji Zone and located 1200 km from Addis Ababa. It covers an area of 4561km<sup>2</sup>. The area supports diverse smaller, medium, and larger mammal's species including elephant, buffalo, giraffe, lelewel Hartebeest, defassa waterbuck, oribi, bush duiker, serval, greater kudu, caracal, warthog, hyena, lion, bushbuck, monkey and other lowland mammals and birds.

**Boyo swamp:** it is a wetland covering an area of 4 km<sup>2</sup>. The Lake is located in Hadia Zone. The area is known for different bird's species some of them are globally threatened and it is one of the selected IBAs of the country

**Segen :**it is found in Burji special woreda cover an area of 138.5km<sup>2</sup>. Geographically the area is located with in the Segen River Valley. The river originates from highland area of Amaro-Mountains and finally drained to Lake Chew Bahir (South Omo Zone). Segen River harbor mammals like Bisa oryx, Berchelle's zebra, greater kudu, warthog, bush pig, duiker, and different species of birds

..

#### **4.6. Sanctuary (Sinkile)**

The Senkele Wildlife Sanctuary is located 48km west of Hawassa and covers an area of 36km<sup>2</sup>. The sanctuary was originally established to protect the endemic and endangered antelope species called Swayne's hartebeests. The sanctuary is located in between Oromia and SNNPRS and managed by the Ethiopian Wildlife Conservation Authority. The open acacia woodland of the reserve is quite scenic and some of the animals are easily spotted, specially the Swayne's hartebeests, the population of which is currently estimated at between 600 and 800. The sanctuary harbor other wild animals including Bohor, reedbucks, greater kudus, oribi antelopes, spotted hyenas, serval and civet cats, caracals, warthogs, common jackals as well as 91 species of bird.

#### **4.7. Community Based Wildlife Conservation Area**

Currently, the number of Community Based Wildlife Conservation Area (CBWCA) has been increasing in the Region. Almost all the Zones and Special Woredas of the Region have identified sites, which are rich in wildlife resources and are requesting support to the Regional Government Culture and Tourism Bureau TPDUP to establish the sites as a CBWCA or other protected area category (National Parks or Controlled Hunting Areas). Accordingly, three sites had demarcated and became CBWCA in the last two years. These include Gibe Shelko-CBWCA in Gurage and Garamba Mountain Conservation area in Sidama zone and Tama Wildlife Reserve (known as Wildlife Reserve and it is under process to convert it to the CBWCA) in Debub Omo Zone. There are also a number of proposed wildlife sites in each Zones of the Region, which are waiting the required preliminary survey (to determine the wildlife potential) and the subsequent community dialogue and boundary demarcation..

A CBWCA is in effect a protected area with legal status/protection, which exists on land owned by a community. On one extreme, the land is managed exactly the same as any protected area, on the other extreme, people may remain living and farming the area, but do so in an environmentally-friendly and sustainable manner. Between these two extremes are a host of possibilities and options.

A key aspect is that the land belongs to the community, they decide what is allowed and what not, and they accrue and distribute the benefits derived from the CBCA.

The communities need to decide to use part of their communal land as a community conservation area. They decide which part of their land will be used for the purpose wildlife conservation & development and make some local rules (by-laws), for example, within this area there will be no settling, no livestock grazing, no agriculture, no hunting and no wood collection or live tree cutting. However, in this area the harvesting of medicinal plants, beekeeping etc will be allowed.



## **Bureau of Culture and Tourism Website Compiled Information by Girma Timer**

Such communities' measures would help for the improvement of wildlife situations in the reserve i.e the revival of the vegetations and flourishing of wild animals (mammals, birds etc). Form the CBCA, the community can start generating income by providing different services for visitors including, guiding, developing tourist rest-camp, traditional food and coffee preparation, selling different handicraft products, showing their cultural music and dance and other social practices. The tourists are also charged a fee to stay in the rest-camp and the community keeps and distributes the income.

As the Wildlife Conservation Area owned by the community it can be properly protected and developed their by the numbers of wildlife increases, and then it becomes necessary for the community to reduce and control their number. The community can decide together with Government body (the region wildlife department) to set some quota to cull some hunt able wild animals from the reserve for sport hunter and there by the community can get an opportunity to gain additional benefit thereof (from sport hunting).

### **4.8. Important Bird Areas (IBAS)**

So far, 10 important Bird Areas have been identified as occurring in the SNNPRS. These includes Bonga forest, Boyo wetland, Lake Chaw Bahir, Konso- Segon area, Mugo Highlands, Nech-Sar National Park, Omo River, Mago National Park, Omo National Park and Lake Turkana and Omo Delta. The key birds for the region are Category 1. Globally Threatened Species: vulnerable (Wattled Crane & Lesser Kestrel ), and Near threatened (Pallid Harrier, Lesser Flamingo, Friedmann's Lark, Abyssinian Long claw\*) and Category 2. Restricted-range species ( Nech-Sar Nightjar\* and Ruppell's Chat). Of the globally threatened birds, two are classified as vulnerable and four are near threatened. Both the restricted range species are endemic to Ethiopia and belong to globally Identified Endemic Bird Areas. The other endemics record for the region Abyssinian Long claw, Abyssinian woodpecker, Abyssinian catbird and black-headed Siskin. The Bonga forest holds 14 highland biome species), Nech-Sar National Park is well endowed with nightjar: four species including the endemic Nech-sar nightjar. The lakes of the Region Chewbahir, Abaya, Chamo, and Turkana are recognized as wetlands of international importance as they regularly host 20,000or more water birds.(Click here for more information about IBA of SNNPR)





Pelican's congregation (Lake Chamo) Marabu Stork, Abyssinian G.Hornbills, Grey Hereon, Thick B Raven



#### **4.9. Forest**

The density and distribution of natural vegetation varies from place to place. The SNNPRS has a relatively wide area of forestland in western parts of the Region. The Northwest part of the region is covered with dense mountain forest, where as the southern part is covered with open grasslands and woodlands. According to woody biomass inventory and strategic planning project study (1997), about 11% of the total area of the Region is covered by forest. These forest types include broad leaf forest, mixed forest, riverine forest, and plantation forest. They are found mainly in Benchi-Maji, Kafa, Sheka, Dawro, Sidama, Gamogofa, South Omo, Yem, and Amaro Special Woreda. National Forest Priority Areas are also identified in the above zones.



Western Forest Chebera-Chrucura National Park

#### **4.10. Wildlife (Mammals, Birds, Plants, others)**

Ethiopia is the home of East-Africa's famous wild animals (Walia Ibex, Niyala, Red wolf, Lion, Elephant, Eland, Zebra, Hartebeests, Rhino, Leopard and Buffalo etc ). The country has different wildlife protected areas (National Parks, Sanctuary, Wildlife Reserve, Controlled Hunting Areas, and a number of Community Based Wildlife Conservation Areas) which are among the best places in the entire continent to see these larger magnificent wild animals' species in their natural environment.

Owing to the diverse climatic conditions and landscape, the SNNPRS endowed with wide spectrum of wildlife resources and leading in the country in the possessions of Wildlife Protracted Areas. The Region has an incredible range of wildlife habitats, each one with its own unique range of species. There are seven National Parks, two wildlife Reserve, six controlled Hunting Areas, one Sanctuary, four Community Based Wildlife Conservation Areas and 10 important bird's areas in the Region. So far a number of larger, medium, and smaller mammals, birds, reptiles, fishes, and amphibians have been recorded in these Wildlife Protected Areas of the Region. [Click here to lists of wild animals.](#)

#### **4.11. Water Bodies**

The Region is fortunate in possessing a number of water basins, which is certainly one of the reasons for the rich biological diversity. There are a number of rivers rising from the different highland parts of the region, in which most of them drains at the end to the Great Rift Valley Lakes (Hawassa, Abaya, Chamo, Turakan and Chelbi and other smaller creator lakes) of the Region. The two large water basins of the region area the Gereat Rift Valley lakes river basins and the Omo Valley River basins..

##### **4.11.1. Rivers and Lakes**

There are perennial and seasonal rivers in the Region having different volume, length, and potential. Major River such as Omo (one of the big river in the country), Gibe, Gojeb, Bilate, Segen, Akobo and Woito etc. and a number of springs and waterfalls are found in the region. Most of the Rift Valley Lakes that the country possess are as follows: Lake Abaya (the largest of the Great Rift Valley Lakes of Ethiopia), Chamo (the most productive), Hawassa, Rudolf (located border with Kenya) are very well known for their fishery production. These water bodies are home for crocodiles, hippopotamus, and diverse fish's and waterfowl species. Besides, the lakes are suitable for sport fishing, boating and for other tourism recreational purposes



Lower Omo River (Karo Area) and upper Omo River (Dawro Zone)

Most of the lakes are suitable and safe for swimming and other water sports. Lakes Chamo, Hawassa, and Chew-Bahir are ideal places for bird watchers. Most of the lakes are not fully exploited for tourists except Lake Hawassa and to some extent Chamo where tourist class hotels are built along the shore of the lakes and the nearby town. The Rift Valley is also a site of numerous natural hot springs and the chemical contents of the hot springs are highly valued for their therapeutic purposes for the local communities and others. In short, the Rift Valley is endowed with many beautiful lakes, numerous hot springs, warm and pleasant climate and a variety of wildlife. It is considered as one of the most ideal areas for the development of international tourism in the region and the country as a whole.

#### **4.11.2. Waterfalls (Cascade)**

The rugged nature of the terrain and the long rainy season are reasons for the formation of natural waterfalls in the Region. The most spectacular waterfalls include Ajora fall: (on border of Wolita and Kembata-Tembaro), Acho fall (Gurage,) Logita and Bonora falls (Sidama), Bartta fall (Kafa), Finchiwa fall (Hadiya) and Shekshko fall (Sheka Zone).





Ajora (on Border of Wolita and Kembata Tembaro Zone) & Bonora water fall (Sidama Zone)

### 4.11.3. Cold and Hot Springs

The Region has numerous natural springs as well as holly and mineral waters which are curative & attractive. The Forty-Springs “Arba-Minch” ( Gamo-Gofa), Wondo-Genet & Gidabo Hot-Springs (Sidama), Arto Hot-Springs (Halaba), Dadiben Hot-Springs (Kaffa), Luqe and Jato Hot-Springs (Gurage), Wejemta and Usinka Hot-Springs (Benchi-Maji Zone).

## 4.12. Landscape/Topography

The topography/ landscape of SNNPRS is characterized by rugged land features with plenty of massif plateaus, and plains that have a large number of permanent and intermittent rivers flowing to the lakes. The altitudinal variation of the region ranges between 376m asl, at lake Rudolf in Debub Omo zone to 4207m asl. on the Guge Mountain in Gamo-Gofa zone. The region is bisected by both the Great Rift Valley and Omo River Valley system.

### 4.12.1. Mountains

The Mountain ranges runs northeast to southeast dividing the Omo watershed from that of the rift valley lakes. West of the Omo is the southwest extension of the plateau which has a very broken landscape or has a relatively rugged land features than that of the eastern side. The Mountains of the Region have

magnificent scenery and are the sources of many rivers and springs. The most glorious mountains of the Region includes: the terrain of Bench-Maji, Kaffa, Sheka, Dawro-Konta and Yem are under the western bisection and in this region the Maji, Yeki, Sherta, Tocha-Tuta, mountains and the Benchi Massifs are some of the prominent peaks. Guge Mountain, the highest mountain with a peak rising about 4207 m a.s.l, found in Gamo-Gofa. Germba Mountain in Sidamo 3321m a.s.l., Dello mountain in Amaro Special

## **Bureau of Culture and Tourism Website Compiled Information by Girma Timer**

Woreda 3232m a.s.l., Ambericho mountain in Kembata Timbaro 3058m a.s.l., and Mugo mountain in Silte Zones 3000m a.s.l. Sanjia & Soyama Mountains are some of the high mountains found east of Omo River basin. Most of these highlands (particularly the western) covered with rain forest.

### **4.12.2. The Great Rift-Valley**

The Great Rift Valley is a unique geographical feature, which cuts Ethiopia in to two. It is the only geographical feature of the plane earth visible from the moon. This vast valley is rich in water bodies that host indigenous and migrant birds and animals of varying species.

The Ethiopian Rift Valley, part of the famous East African Rift Valley, is typical feature of the SNNPRS. The valley comprises numerous hot springs, beautiful lakes and a variety of wildlife. The Great Rift Valley's passage through SNNPRS is marked by a chain of five main Lakes ( Hawassa, Abaya, Chamo, Chew Bahir and Rudolf( found on the border with Kenya).. Each of the lakes has its own special life and character and provides ideal habitats for the variety of flora and fauna that make the region a beautiful and exotic destination for tourists.

### **4.12.3. Lower Omo Valley**

The lower Omo River valley in southwest Ethiopia is one of the last unspoiled wilderness regions in Africa. The Omo River, which bisects Ethiopia's largest and most inaccessible parks mainly, feeds the valley. The Omo National Park, which lies on its west bank and Mago National Park on its east Bank. The **Omo River** is an important river of southern Ethiopia. Its course is entirely contained within the boundaries of Ethiopia, and empties into Lake Turkana (Rudolf) on the border with Kenya. It is the principal River basin in the country; the part that the Omo basins drainages includes some part of the western Oromia Region (in the upper stream area) and large portion of (Middle & Lower valley) of the SNNPRS.

The lower valley of the Omo unlike any other place on Earth has the largest diversity of ethnically different groups in the whole of Ethiopia and possibly in Africa. There are more than 16 different languages spoken (excluding dialects).The entire Omo region is inhabited by ethno-cultural groups pertaining to two important linguistic lines: Nilo-Saharan and Afro-Asiatic. The Nilo-Saharan linguistic line includes Bume, Mursi and Surma while The Afro-Asiatic line is comprised of Karo, Banna, Bashada, Hamar, and Dizi who are Omotic and Dassanech, Erbore, Tsamako who are Eastern Cushitic..

**The Lower Valley of the Omo River** is rich in Paleo-anthropological fossils and a prehistoric site where many hominid fossils have been found so far. . They are of fundamental importance in the study of human evolution. Several hominid fossils and archaeological localities, dating to the Pliocene and Pleistocene, have been excavated by French and American teams. Fossils belonging to the genera Australopithecine



## **Bureau of Culture and Tourism Website Compiled Information by Girma Timer**

and Homo have been found at several archaeological sites, as well as tools made from quartzite, the oldest of which date back to about 2.4 million years ago.

The main ethnic groups in the Lower Omo Region and its surroundings includes, Konso, Tsemai, Erbore, Hamer, Benna, Dassench, Karo, Nagngatom, Mursi, Ari, Surma, Muguji, Meeniet., . The dry season (**July to August and December to January**) is the best time to visit the entire Lower Omo Valley and its people.

## ***V. TOURISM***

### ***5.1. Overview Tourism***

#### ***5.1.1. Foreign tourism***

International tourist arrival to the Region has shown a gradual growth every year. Most international tourist come to the SNNPRS to appreciate the untouched culture of the diverse ethnic communities and the associated natural attractions. The ethic communities in Debub Omo including Hammer, Bena, Mursi, Ari and their cultural practices as well as the Dorze and Konso people cultrual practice are very well-known and visited by many foreigners. Besides, NechSar and Mago National Parks are among the natural attraction found along the destinations visited by the tourist together with the cultural practices of the communities.



Tourist visiting the lower Omo Valley Hamer and Dasench woreda of South Omo



### 5.1.2. Domestic tourism

**It** is the activity of people visiting destinations within their own country's boundaries or tourism of national visitors within the economic territory of the country. Religious travel is common in the Region. Domestic tourism (in relation to nature and culture) has shown a gradual increment for the last one decade in the Region. The number of national visitor is increasing in most tourists' destinations area (National Parks and Cultural sites), indicating the interest of people to know the different attractions endowed in their neighboring Regions. There are a number of opportunities to organize and develop different types of domestic tourism packages in the region. These may include:

1. **Individual and group travel:** Single men or women, married couples are moving far away from their normal living environment for honeymoon, recreational purpose(weekend)...
2. **Family travel:** Family member travel from their living/working area (mostly town) to rural home to see their family and to pass holidays with them. During this time many family members are visiting a number of tourists' sites.
3. **Business & conference travel as Incentive Tourism:** Institutions and different Governmental and Non Governmental organization are encouraging to organize tour to different recreational sites to encourage the domestic tourism sector. For example: Organizing workshop, seminar, meeting, or discussions, far away the normal office environment or in the tourist, areas are highly preferable and encouraged by higher officials of different organizations as an incentive tourism and encouraging domestic tourism. In the region Arba-Minch, Hawassa, Butagira, Yirgalame, Sodo, Wolkite, Hossana, Dilla, and Jinka are some of the towns in the region where several workshops and discussion organized to be held.
4. **Educational and Study Domestic Tourism:** Educational institutions arrange student tours per semester to various tourist sites (National parks, lakes, Cultural areas...). These include the Wildlife tours by the wildlife department,, Nature clubs in school & higher educations, teachers of

## **Bureau of Culture and Tourism Website Compiled Information by Girma Timer**

higher schools, anti-HIV-AIDS Clubs, wildlife and tourism clubs, etc...For example the Wondogent Forestry college arrange trip for the students to wildlife area (Nech-Sar and maze National park) every year at the end of each semester for one or two weeks.

5. **Religious travel** Domestic Tourism: people, independent of the type of religion followed, has traveled to different Churches, Monasteries and Mosques set up away from their living area within the country for the religious purpose. They traveled to these religious sites individually and in group with family etc.....

### 5.1.3. Ecotourism

The SNNPRS is amazing region with abundance biological diversity. The region is known for its rich vegetation cover such as, Rain forest, woodland, savannah grassland, riverine associations, and wetland vegetation with their common and respective wild animals (mammals and birds). There is a great opportunity to experience a range of outdoor activities, such as caving, hiking, jungle trucking, swimming, boating, rock climbing, river cruising, bird watching and much more

### 5.1.4. Agro-tourism

The concept of Agro tourism is a direct expansion of ecotourism, which encourage visitors to experience agricultural life. It is the form of tourism, which capitalizes on the rural cultural land scape as tourist attraction. The Region is potential for agro tourism development. The Sidama zone ( Aleta wondo), Gedeo zone(Yirga-chefee) for their organic coffee production and cultural Agro forestry practices; The forested and the organic coffee origin of the western part of the Region (Bonga, Benchi-Maji and Sheka zones); The Konso Cultural landscape (terracing practices); these are among others actual and potential for agro-tourism development in the Region.

## **5.2. Tourism Destinations**

There are potential and actual tourist destinations in the Region, categorized based on the following facts among others:

1. The status of the attractions: ( i.e. promoted and relatively known, presence of universally significance (world heritage sites)),
2. Available tourist facilities and infrastructures (Hotels, lodges, restaurants, roads (leading to the attraction sites), banking, electricity, telephone etc).
3. The types of tourists arrival in each areas (recreation, religious, holiday, conference, business etc) and
4. Tourist flow or number (foreigner & domestics),

Accordingly, the tourists destination of the Region have classified in to actual destination (where many tourists actually travel to the sites) and potential destinations (where some or a few tourist travel to the area).

## **Bureau of Culture and Tourism Website Compiled Information by Girma Timer**

The northern and most southern zones are relatively developed in tourism industry where as the rest of the zones are highly potential in terms of tourism resources but the list visited indicating much work need to be done in terms of facilities and infrastructures so as to exploit the resources for social and economic development through promoting sustainable development.

### **5.2.1. Actual Destinations (Arba-Minch, Karat, Jinka, Hawassa, Dilla, Butajira...)**

#### **1. Arba-Minch**

**Arba-Minch**, the capital city of Gamo Gofa Zone, is one of the largest towns in SNNPRS. It is located on a lovely position overlooking Lake Abaya to the north, Lake Chamo to the south. Currently, the Arba-Minch town is getting expanded and developing mainly due to the increasing flow of national and international tourist in the area. The town is the best route to arrive to the country's famous tourist destinations including Konso and South Omo Zone or the famous lower Omo valley. Besides, the town provided a base for exploring the nearby different natural and cultural attractions including Nech-Sar National Park, Crocodile Markets, Arba-Minch ground water Forest, The Forty springs, Bridges of God, Lake Chamo , Lake Abaya, traditional handicraft products and Cultural landscape of Dorze and Chencha area.



Oyida men (left) and Boat tour on Lake Chamo of Nech-Sar National Park

Arba-Minch is one of the fast growing towns in the country and is a combination of two towns located in a four km distance apart, Sikela on the plain to the north is commercial and residential center, Shecha, perched on the hill overlooking the lakes, is where most of the government buildings ad suitable hotels are found. Currently, due to the growth of Arba-Minch the two towns (Shecha and Sikela) become one.



**Bureau of Culture and Tourism Website Compiled Information by Girma Timer**

**Gamo-Gofa Zone and Arba-Minch area Attractions:** Arba-Minch, the capital city of Gamo-gofa Zone, and its surrounding area endowed with diverse and unique cultural and Natural attractions in the country.. Almost all the attractions are accessible by asphalt or gravel roads and lake transport. There is public transport as well as available car and boat rent in Arba-Minch town. Some of the attractions include:

**Nech-Sar National Park,** one of the top most beautiful and biologically rich natural wonders in east Africa,



Views of Lake Abaya and Arba-Minch Forest

**The two Great Rift Valley Lakes:** Lake Abaya the largest lake in the Ethiopian Rift system covering 1200km<sup>2</sup>. Lake Chamo which is located south of lake Abaya very well known for its high fish productivity and crocodile population in the world..



Lake Chamo Crocodile Market and water birds congregation



## **Bureau of Culture and Tourism Website Compiled Information by Girma Timer**

**The Forty Springs:** there are a numerous springs emitted from the foothill of Arba-Minch escarpment. the number of holes of the spring is more than 100 but the people traditionally estimated to be 40 and it is from which the name of the town derived as Forty Springs means “Arba-Minch” in Amharic.

**Crocodile Market:** one of the famous attraction in Africa and unique in consisting a congregation of hundredth Giant Nile crocodile population along the shore of Chamo Lake. The name of the sites derived from the congregation the giant Nile Crocodiles in one sites which is similar with traditional markets of the country where many people gather on one sites for marketing.

**Arba-Minch Crocodile Farm and Hippo-viewing platform:** the ranch is established on the shore of Lake Abaya to grow hatchelling collected from the two lakes. Tourist can visit the ranch to appreciate the stages of development and handling requirements of crocs. It is the best sites providing viewing for the Lake-Abaya and Hippo herds. There is also local and motor boat services by the organized ArbaMinch locals near the ranch.

**Market:** The most interesting market in Gamo-Gofa Zone is **the Arba-Minch market:** It is one of the big Markets, which stands on Saturday and Thursday every week. Tourist can get fresh fruits, bamboo products and diverse agricultural products. Other Market include Chench (Tuesday & Saturday), Dorze (Monday & Thursdays), Selamber (Saturday), Sawla (Saturday)

**Fishing on the lakes:** Fishing is possible with permission on both lakes: catfish, tilapia, barbus, tiger fish and Nile perch are available in both lakes but Lake Chamo is highly productive with high fish catch.

**The Dorze and Chench** people traditional practices: the weaving, handicraft products, the colorful market with woven products, Dorze Huts together with the beautiful landscape and Guge Mountains (the highest peak in the region)



Chench Market and Dorze hut

## **Bureau of Culture and Tourism Website Compiled Information by Girma Timer**

**Maze National Park:** Maze valley wildlife area is found within GamoGofa zone located in between five Woredas/districts/ namely: Qucha, Deramalo, Kemba, Doumba-Gofa and Zala Woredas. The park has access through Sodo town and via Jinla (at the Back). Maze National Park is rich in wildlife resources (mammals & Birds) including the endangered & endemic Swayne's hartebeests population.

**Place to stay and eat in Arba-Minch: Sikela (Down town)** holds different hotels and restaurants ArbaMinch Tourist Hotel (standard hotel with quality services), others include Abi restaurants, Kayro Hotel (Click here for accommodations & hotels lists & information)

**Shecha (upper town)** Paradise Hotel, Swayne's Hotel, Bekele-Mola Hotel, Soma lodge are perched along the Arba-Minch escarpment overlooking to the south, north and east the ArbaMinch Ground water forest, the volcano between the two lakes (the bridge of God), Nech-Sar NationalPark and the views of the two lakes. Andinet Hotel, Abaya Hotel, Wubete Hotel, Chamo Hotel, Arba-Minch Hotel, soma restaurant are found with in the town.. There are also a number of pensions, restaurants and hotels in both upper & down towns and in the middle of the two towns.

Visitors can have information about the various attractions & services available in ArbaMinch and surrounding areas from the Gamo-Gofa Zone Culture and Tourism Office situated some 300m from the Agip station along Bekele Mola Hotel in (Shecha) ArbaMinch.. Here tourists can get information about NechSar National Park, Lake chamo & Abaya, Chenchu & Dorze cultural villages, and about trekking in Arba-Minch Ground water forest and Guge Mountains as well as cycling and bird watching trips



Banana, one of the top most cash crops around Arba-Minch area and Dorze House

### **Address**

**Gamo Gofa Zone State Communication, Culture, and Tourism Department**

**Po. Box 69**

**Telephone: 046881-2046**

**Fax: 0468812282**

**Arba-Minch**



## 2. Konso/Karat/

**Karat:** the administrative center of Konso Special Woreda also called Konso. Konso serves as a kind of border line town and gateway to the lower Omo valley. Karat, the capital town of Konso, and Dukitu, the smaller town located some 2 km from Karat are an ancient, complex and fascinating culture that attracts the interests of many tourists and researchers. At the market different culturally produced products are available for sell. The colorful woven cotton ‘shorts’ and blankets, tea millet, tobaccos, raw cotton, sweetpotatos, teff, butter, incense and cassava, souvenirs (like wooden dolls, local knives, miniature wagas) are available in the market days which stands every -----of the weeks.



Konso village and Wakas

**Konso Special Woreda Attractions:** The Special Woreda is endowed with unique cultural assets and rich living traditional practices in Africa. The attractions include:



Konso Cultural Mora and Terracing practices

The Konso Cultural landscape which comprises the traditional walled Villages, the Mora, Generation pole and the terracing practices, the colorful Konso market, traditional arts (Music & dance), together with the New-York: a bizarre landscape of sand panicles formed by wind and rain

## **Bureau of Culture and Tourism Website Compiled Information by Girma Timer**

(erosion) and Konso area **Paleo- anthropological sites** are major among others that attracts many national and foreign visitors.

Many fossils (unusual for their large size), human, animals have been unearthed from the konso special Woreda on the site of an old lake in 2002 and have been dated to between 1.3 and 1.9 million years old. The konso Cultural landscape study, preparation of management plan and nomination file have already been completed and it is hoped that by the end of 2009 UNESCO will declare the Konso Cultural Landscape as one of the World Heritage Sites.

**Market:** The most interesting market in Konso special Woreda is **the Karat (or Konso) market**

**Place to stay and eat in Konso:** Camping is possible in the different hotels. Eidget Hotel, Kiddst Mariam Hotel, konso Wubete Hotel Hess travel Ethiopia is constructing new and comfortable lodges on the hill over looking Karat and Bukitu (Konso towns). (Click here for accommodations & hotels lists & information)



Konso women dressing style

Visitors can have information about the various attractions of the Konso area from the Konso Special Woreda State Communication and Culture and Tourism Office situated in the Karat town.

Address

Konso Special Woreda State Communication and Culture & Tourism department

Telephone

Karat



### 3. Jinka

**Jinka** is an administrative center of Debub-Omo Zone and it is one of the smallest towns in the Region. It is located about 750km from Addis Ababa and 138km from Konso. Jinka is the nearest town to Mago National Park and to Ari, Bena, Murssi, Boddi and Dime ethnic groups.



Dassench Young and Hamer men painting faces

Although, the location of Jinka is far from the central part of the country, good services (hotels & restaurants, banking, electricity (fuel dependent), telephone(both Ground & Mobil) provided for tourists. The largest and colorful Sunday market is the best for visitors. Different ethnic groups the Murssi, Benna, Bodi, Ari, Hamer, Karo, Koygo, attend the market day. The Debub Omo Zone Museum & research center supported by the German .is perched on the hill overlooking jinka town on the northeast. The Museum has different display and cultural materials, which are the reflection of the different ethnic groups living in the South Omo Zone.



Hamer Girls

## Bureau of Culture and Tourism Website Compiled Information by Girma Timer

**Debub Omo Zone Attractions:** this Zone is one of the top most tourist destinations and endowed with unique and diverse cultural, historical and natural attractions in the country. The attractions include:

**Omo National Park,** Mago National Park, Chelbi Wildlife Reserve, Tama(Murssi Bodi) Community Based Wildlife Conservation Areas, Murule and Wolishet Sala Controlled Hunting Areas, Lower Omo Delta and Lake Turkana biodiversity.

**Peoples of the area:** the “Lower Valley of the Omo” consists of 16 different ethnic groups that have their own culture, language, norm, and traditional life styles. The Murssi, Bodi, Koygo, Ari, Bena, Hamer, Dassench, Nagatom, Muguji, Karo, Tsemay people are found in this Zone. **A visit to the lower Omo Valley (Debub Omo Zone) is a visit to another world.** The environment is harsh and wild but the people are welcoming and their life styles and tradition is untouched and unmixed for centuries.



**Bodi people fattening tournament**

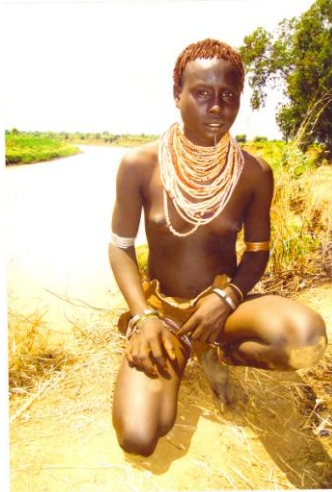
**Historic and Cultural Heritages:** the lower Omo Paleo- anthropological sites

**Market Day in South Omo/lower Omo:** A terrific way of seeing some of the colorful Lower Omo People is the traditional local Market. The most interesting market in Debub-Omo Zone (Lower Omo Valley) include: Jinka (Saturday, ), Gazer (Monday & Thursday), KeyAfer(Thursday), Qaqo( Monday) Dimeka (Tuesday & Saturday), Turmi (Monday), Omorate( ), Weyto (Saturday), Surma (Sunday), Hana(Saturday)



## **Bureau of Culture and Tourism Website Compiled Information by Girma Timer**

Place to stay and eat: Rocky recreation center (park), Lucy campsite, Jinka resort, Orit Hotel, Goh Hotel, Kokeb Hotel, Jinka Red cross pension, Mengistu pension, there are also different local favorite hotels ivangadi, Degene Hotel, Mehbub pastry etc (Click here for accommodations & hotels lists & information).



Karo Girl at the Bank of Omo River (left), and Hamer Children

There are tourist service rendering facilities (in the different towns (Key-Afer, Tourmi, and Omorate)

Visitors can have information about the various attractions of the Debub Omo Zone from the Zonal Culture and Tourism Office situated at Jinka..



### **Address**

**Debube Omo Zone State Communication and Culture & Tourism department**

**Telephone: 0467750054**

**Fax: 0467750008**

**Jinka**

#### 4. Hawassa/Yirgalem

**Hawassa**, the capital city of SNNPRS, is positioned at the edge of Lake Hawassa. It is an attractive town in a beautiful setting. The town is a pleasant place to break the north- south journey and is well equipped with places for recreations Lake Hawassa and different standard Hotels, lodges established along the shore of the lake and with in the town. Visitors enjoy with boat trip on the lake in the morning and late afternoon, which make a nice pleasure trip, and to see the different bird's species, hippo herds as well as the beautiful early afternoon sunset. .



Lake Hawassa Sun Set and boat tour

The lake is known for its high edible fish production (tilapia, catfish, barbus) and also harbor very good bird life. Egyptian goose, kingfishers, herons, strokes, crakes, darters, and plovers are among others easily seen on the water.



Egyptian Goose and Sidama Cultural House

### **Bureau of Culture and Tourism Website Compiled Information by Girma Timer**

A pleasant walk is along the shore of the lake and for good view of the lake and the surrounding areas it is preferred to climb either on Tabore hill or use the top of some of the cafeteria building found in the center of the town such as Lewi, Dashin, Haroni international hotels. Hawassa Market days are Monday and Thursday and the fish market are worth wonder. There are a number of Business center that can provide internet services for tourists. There are also different supermarkets in the town.

**Place to stay and eat :** South spring hotel, Gebre kirstos hotel, Yamer hotel, Paradise hotel, Beshu hotel, Warka hotel, unique Park Hotel, Lewi Hotel, Wabe-Shebele hotelNo2, Haroni international Hotel, Pinna Hotel (Click here for accommodations & hotels lists & information)



Hawassa St. Gabriel Church

**Hawassa area Attractions:** Hawassa is also the capital city of Sidama Zone. Sidama zone holds diverse cultural, historical, and Natural attractions. Almost all the attractions are accessible by asphalt or gravel roads and public transport from Hawassa.. Some of the attractions include: **Wondo\_Genet hot spring resort** located around 15 km from Shashemene or 24 km from Hawassa via Wondogenet Mazoria, Aregash lodge, Gidabo hot spring, and Wonsho traditional worship site located around Yirgalem town, which is about 45km from Hawassa. Logitta and Bonaro waterfalls found in Bensa Wereda/District/ and Garamba Mountain Community Based Conservation Area in Arbegona Woreda/district about 70km from Hawassa via Aleta Wondo town and Arbegona woreda. Loka abaya National park found in Loka Abaya woreda located some 60km from Hawassa. Fiche the unique new year festival celebrated every year by the Sidama People (Click fiche new year festival for more information).

**Market: Most interesting big** Markets found in different woreda town's donot have constant day of marketing in Sidama Zone. Most market day stands every five days except the big markets of Hawassa ( Monday & Thursday ) and Yirgalem ( Monday & Thursday), Tulla (Friday & Teusday), Aleta-wondo (Wednesday & Saturday), Bensa Daye (Tuesday & Saturday) have constant market days.



**Bureau of Culture and Tourism Website Compiled Information by Girma Timer**



**Aregash Lodge Yirgalem**

**Tourist service providers:** The Region Bureau of Culture and Tourism, Sidama Zone State Communication & Culture and Tourism coordination, and Hawassa town Tourism Coordination Office,

**Address**

**Sidama Zone State Communication and Culture & Tourism department**

**Po. Box: 100**

**Telephone: 0462216673**

**Fax: 0462206608**

**Hawassa**

Ethio Treasure Travel, one of our partner, is a tour operator that promot sustainable and sensitive tourism. It is at the center of the Hawassa city (Piassa) on 2<sup>nd</sup> floor of Rehoboth Building. The office providesn different information about the cultural, historical, and natural attractions sites of the Region and the Hawassa town area as well. Adress

**Address**

**Ethio Treasure Travel Ltd**

**1808 Hawassa. Ethiopia**

**[Tel:00251911392432](tel:00251911392432)**

**[www.ethiotreasure.net](http://www.ethiotreasure.net)**

**Registered in Ethiopia No. 0004798046**

## **5. Dilla/ YirgaChefe**

Gedeo Zone is located south of Sidama zone and it is one of a unique and rich landscape in the country in terms of the cultural Agro-forestry practices. Each of the Gedeo farmers is known for Enset (false banana) and coffee together with old trees in his pieces of farmland. Live tree cutting is highly criticized in the Gedeo people tradition. Viewing the forested cultural landscape along the main international road (Addis-Moyale Road) and on different vantage point along the road is highly breathtaking and unique. Most tourists visit the Agro-forestry land of Gedeo on foot following the different footpath guided by local guide.



Dilla, administrative centre of Gedeo zone, is located south of Hawassa just and it is the borderline of Sidama and Gedeo zone. It represents a kind of epicenter of the Southern Ethiopia tradition of stela erection..

Tutu Fela, Tutit and Scoro-Sodo stela sites are the most impressive and located with interval of average some 6 to 10 km along the high way with additional 2 to 4 km away from the high way. The Gedeo zone landscape is highly breathtaking for traveler along the high way in which big old trees mixed with coffee and Enset is common cultural practices for any Gedeo farmer. No open place has seen on the Gedeo landscape. Tourist can visit the Gedeo agricultural land (Mixture of tree, coffee and Enset) following the traditional footpath with help of local guide. Currently, there is some movement from the Region and local administrations to nominate, the Gedeo cultural landscape (which comprises tree, coffee and Enset a type of agro-forestry) together with the numerous historical stela sites, as a world heritage sites.



## **Bureau of Culture and Tourism Website Compiled Information by Girma Timer**

Yirga-Chefe, the administrative center of Wenago-Werda of Gedeo Zone, is located about 20 km south of Dila along the highway of Addis to Moyale. Traveler usually makes a brake in Yirgachefe to get the tasty and flavored coffee in the suitable hotels and restaurant available in the town. Yirgachefe Coffee Farmer Cooperatives union is an umbrella organization of 23 primary cooperatives. There are 44000 member farmers organized under these primary cooperatives are beneficiaries of the export price, which is the result of the activities of the union. The union exports high quality premium Arabica organic coffee.

**Market:** The most interesting market in Gedeo Zone is **The Dila market:** It is one of the big Market which stands everyday. . Other Market is Wonago (Thursday), Yyirgachefe (Saterdag) . It is worth to see the various agricultural products such as Enset and coffee and cattle on market day. Public transport to Hawassa and the surrounding small town is available in the Dila Bus station.

**Place to stay:** there are a number of hotels and restaurant that provide services for tourist in Dila town. These includes: Get Smart Restaurant, Zeleke Hotel(Click here for accommodations & hotels lists & information)

Visitors who come to Gedeo Zone can have information about the attractions of the Zone from the Gedeo Zone State Communication Culture and Tourism Office found in Dila town

### **Address**

**Gedeo Zone State Communication and Culture & Tourism department**

**Po. Box**

**Telephone: 0463313088/ 0463312506**

**Fax: 0463313152**

**Dila**

## 6. Wolkite & Butajira

**Wolkite**, the capital town of the Gurage Zone, is located 155km away from Addis Ababa to the west along Addis Ababa- Jima road. The town has been providing different services for traveler who breaks the East-West journey. There are different hotels and restaurants in the town who prepare local favorite food Kitffo, Qocho, etc...Wolkite town are a base to visit the various cultural, historic, and natural attractions of the northern parts of Gurage Zone. Muher Eyesus Monastery in Muher woreda ---km from Wolkite. GibeSheleko National Park located 10km from Wolkite. Aftir Yetefetro dene (Aftir natural forest) 60km from Wolkite and 10 km from Endibr town. .

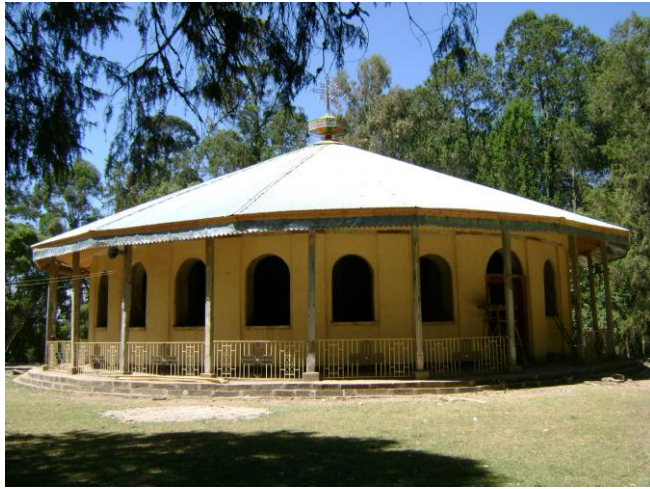


Gurage women and Yejefor Menged (road)

**Butajira** Administrative center of Meskan Woreda is located 135km from Addis Ababa to the south via Addis Ababa-Sodo road. Butajira town has been providing different serves for traveler who breaks the North-south-west journey. There area different suitable Hotels and restaurants in the town providing services and local favorite food. The town is a base to visit the famous cultural & Historic attraction site of Sodo woreda and Meskan Woreda of the southern parts of Gurage Zone. Tia stelae site(world heritage site) is found along this road 40km North of Butajira or 88km south of Addis Ababa. Midrkabd Abo-Monastery is also found in Sodo Woreda at a distance of about 18km away from the high way to the eastern direction. A lot of National and foreign tourists arrive to visit these sites for recreation as well as for religious purpose (in the later cases). .

**Market:** The most interesting markets in Gurage Zone include: Butajira (Friday), Emdibr (Friday), Agenna ( Monday), Bole (Saturday), Eigeze (Wednesday) and Kella Market( Bui)

**Bureau of Culture and Tourism Website Compiled Information by Girma Timer**



Midrekebd Abo and Ener Amanuael Monastery

**Place to stay and eat :** Eitagenehu hotel, Gebire Mamo hotel, Tefera hotel, Abegaz wolde Argaw hotel( found in Wolkite) and Kassech Fikadu Assore hotel, Omega motel, Shell motel, Mateos metasebia hotel, Chiban hotel(found in Butajira ) (Click here for accommodations & hotels lists & information)



Qebena women and Mareko men in Gurageh Zone

Visitors who come to Gurageh Zone can have information about the attractions of the Zone from the Gurageh Zone State Communication and Culture and Tourism Office or Butajira Woreda State Communication and Culture and Tourism Office

**Address**

**Gurageh Zone State Communication and Culture & Tourism department**

**Po. Box: 55**

**Telephone: 0113302619**

**Fax: 0113302876**

**Wolkite**



**5.2.2. Potential Destinations (Worabe, Hossana, Sodo, Durame, Kulitu, Tercha, Mizan, Masha, Bonga, Ameya, Soyama, Kele, Fofa, Gedole, Laska )**

**5.2.2.1. Central Zone**

**7. Worabe**

**Worabe**, Administrative center of Silte Zone, is located 175km from Addis Ababa and 40km from Butajira town to the south via Addis Ababa-Sodo road. Worabe is recently developed town in the region and has provided coffee & tea as well as traditional food for traveler who breaks the North-south-west journey. The town is a base to visit the famous cultural & historic and natural attractions sites of Zone. Haro-Shetan creator Lake, Alkeso stale, different caves are found 2-6km away from along the high way. Most traveler (National and foreign tourists) visit these attractions.



91 Haro Shetan Creator Lake



92 Silte Girl hairstyle

## **Bureau of Culture and Tourism Website Compiled Information by Girma Timer**

Visitors who come to Silte Zone can have information about the attractions of the Zone from the Silte Zone State communication and Culture and Tourism Office found at Worabe

**Market:** The most interesting market in Silte Zone include: Dalocha Market (Monday) ), Kibet Market ( Thursday),Duna Market (Monday),

**Place to stay and eat:** Hayat hotel, Riead hotel, Mugo Terara hotel, Park hotel (Click here for accommodations & hotels lists & information)

### **Address**

**Silti Zone State Communication and Culture & Tourism department**

**Po. Box: 20**

**Telephone: 0467710012**

**Fax: 0467710003**

**Worabe**

## **8. Hosanna**

**Hossana**, the capital city of Hadia Zone, is located 185km from Addis Ababa and 50 km from Worabe town to the south via Addis Ababa-Sodo road. Hossana is one of the largest and highly populated towns in the region. The town has been providing different serves for traveler who breaks the North-south-west journey. There are different standard suitable hotels and restaurants in the town, which can prepare foreign and local favorite food. The town is a base to visit the famous cultural & Historic attraction sites of Hadia Zone. The Attractions include Batena Cave(Near the town of Hossana), Fonqo alida cave((lemo worda), Hossana Market day (visitors can see the rich cultural traditions(dressing, hairstyle ,etc) of the Hadia people in one place. More than hundred thousands people attend every Saturday on the market) Agamo and Finchiwa waterfalls, Hussein Natural forest, Boye wet land(lake)(one of the Important bird area and Controlled Hunting Area of the country).

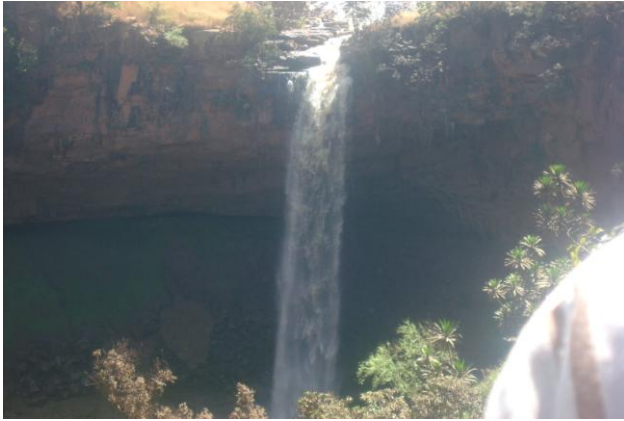


Cultural band of Hadia Zone (left) and Batena cave entrance (right)



## **Bureau of Culture and Tourism Website Compiled Information by Girma Timer**

**Place to stay and eat:** Hossana has a number of tourist services facilities :Batena lodge, Heme Hotel, .Shewaber Hotel, Eidget Hotel, Mobil Hotel, Tamire Debebe Hotel, Ab-sira Hotel (Click here for accommodations & hotels lists & information)



96 97Water falls of Hadiya Zone

**Market:** The most interesting market in Hadia Zone includes Hosanna (Saturday), Jajura (Monday), Homecho ( Thursday), Lissana (Thursday), Fonqo(Friday)

Visitors who come to Hadia Zone can have information about the attractions of the Zone from the Hadia Zone State communication and Culture and Tourism Office found at Hossana.

### **Address**

**Hadiya Zone State Communication and Culture & Tourism department**

**Po. Box: 73**

**Telephone: 0465550825**

**Fax: 0465551318**

**Hosanna**

## **9. Durame**

**Durame**, Administrative center of kambata-Tambaro Zone, is located 224km from Addis Ababa and 39km (along gravel road) or 77km (asphalt (53km) & gravel (24km) from Hossana to the south via Addis Ababa-Sodo road. Durame is recently established town.. There is one suitable Hotels (Messala Hotel) and a few restaurants in the town providing services to visitors of the area.

Attractions of the Zone include Ajora falls located 40km from the administrative center Durame or 15km away from the high way (asphalt road) to the west just on the border of Wolita and Kembata Tambaro Zones. Ajora valley located in the same area and extends to Omo River. This valley is very beautiful and provide natural home for diverse wild animals and birds. .



Cultural house and Ajora water fall (Kembata-Tembaro side view)

**Place to stay and eat:** Messal Hotel Shiferaw hotel, Durame hotel, Misrach hotel, Abinet hotel (Click here for accommodations & hotels lists & information)

**Market:** The most interesting market in kambata-Tambaro Zone include: Durame (Saturday), Doyogena (Friday), Shishicho (Monday), Adero (Saturday), Adilo (Wednesday), Mudula (Thursday) Angecha(stands only once a year) during Maskel holiday

Visitors who come to kambata-Tambaro Zone can have information about the attractions of the Zone from the kambata-Tambaro Zone State Communication and Culture and Tourism Office found at Durame.

**For further Information**

**Kembata Tembaro Zone State Communication and Culture & Tourism department**

**Po. Box: 29**

**Telephone: 0465540175**

**Fax: 0465540014**

**Durame**

## **10.Sodo**

**Sodo**, the Capital town of Wolita Zone, is one of the 22 reform towns in the Regional State considered by the government in its program to develop the living standards of the town dwellers as well as making the town attractive and beautiful for living. It is also a residence for tourists that travel from different directions (Addis Ababa, Shashemene, Hawassa, Arba-Minch) to Sodod & Arba-Minch. The town is located 385km from Addis Ababa and 155km from Hawassa to the southwest. There are two main asphalt roads running from Addis to Sodo (one comes via Shashemene the other via Butajira). The town shows very fast growth with the construction of more than 20km internal asphalt roads, different standard hotels, restaurants. .

## Bureau of Culture and Tourism Website Compiled Information by Girma Timer

Sodo connect many of the region Zones and Special Woreda and has four main doors. These are Sodo-Arbaminch-Jinka, Sodo-Maze National Park-Sawla(Gofa and Basketo), Sodo-Waka-Tercha-Ameya or Jima and Sodo-Shashemne Addis Ababa (Hawassa)



Cultural dance and Ajora fall (Wolyta side view)

**Attractions:** Wolita zone is endowed with rich cultural, historical and natural attractions. Waterfalls (Ajora), Hot springs, historical caves, stelae, historical defensive wall and ditches, ancient cemeteries, living social practices (weaving, pottery, bamboo work, ) traditional food, dressing, funeral, ritual, holiday ceremonies(Maskel),Music & Dance.





Stelae of Wolyta zone

**Place to stay and eat:** Bekele, Mola, Green land hotel, Wolyta wubet hotel, Axum hotel, Batu hotel, bright house hotel, Eyesusalem penision. (Click here for accommodations & hotels lists & information)

Visitors who come to Wolita Zone can have information about the attractions of the area from the Wolita Zone State Communication and Culture and Tourism Office found at Sodo

**Address**

**Wolita Zone State Communication and Culture & Tourism department**

**Po. Box**

**Telephone: 0465512106/0465511952**

**Sodo**

**11. Kulito**

**Kulito**, Administrative center of Halaba Special Woreda, is one of the 22 reform towns in the Regional State considered by the government in its program to develop the living standards of the town dwellers as well as making the town attractive and beautiful for living. It is also a residence for tourists that travel from different directions (Addis Ababa, Shashemene, Hawassa) to Sodo & Arba-Minch. The town is located 315km from Addis Ababa and 88km from Hawassa to the southwest the main road running from Addis to Arba-Minch passes in the middle of the town, Kulito.



Halaba youthful in front of the cultural house

The widely known pepper called ‘Hamus Gebya Berbere’ and other crops (like teff, maize, wheat, castor bean) extensively produced in the woreda area supplied to the market making the capital of the special woreda peculiar one of the hot trade centers in the country. Kulito is getting 24 hours power supply and it is also well serviced town by the available digital telephone, Commercial bank, post office, clean drinking water, and fuel and oil stations. 95% of the population in the special Woreda is dominated by Halaba Nationality that has its own language and culture. All the people follow Muslim religion and all speaks ‘Alabigna’ their local language which is from Cushitic family. .

**Market:** The most interesting market in Halaba Special Woreda is the Halaba Kulito Market day which stands every -----

**Place to stay and eat::** Medina hotel, Misebo pension, Fikreselam hotel, hassen hussen pension, Melka hotel (Click here for accommodations & hotels lists & information)

Visitors who come to Halaba special Woreda can have information about the attractions of the area from the Halaba Special Woreda State Communication and Culture and Tourism Office found at Kulito.

#### **Address**

**Halaba Special Woreda State Communication and Culture & Tourism department**

**Po. Box**

**Telephone:0465560362/ 0465560010**

**Halaba Kulito**

## **12. Tercha**

**Tercha**, the capital town of Dowro Zone, is located 512km from Addis Ababa via Shashemene and Sodo to the southwest. Tercha is a new town established in 1999. The current status of the town is highly promising and shows very fast growth in the region. Currently the town people has with access for clean drinking water, telephone service(automatic ground & Mobile) and 24hours electricity power



## **Bureau of Culture and Tourism Website Compiled Information by Girma Timer**

supply, schools of different level( from elementary to preparatory), District hospital & health centers, market centers and different small-scale industry.

Tercha town the administrative center of the zone serves as a base to visit the cultural, historical and natural attractions of the Zone



**Dawro Cultural dressing and the King Halala Kella defense wall**

The Dawro people like other nationalities of the region have their own culture, language, norm, and lifestyle. . Dawro Zone has rich cultural, historic, and natural attractions which can potentially attract many national and domestic tourists. These include: rain forest (rich in organic coffee & spices plant), different hot springs (Shiqa, bodla, Mamada, Dara, Sogida, Tigisi and Qimeba hot springs) which are used for all sorts disease, Shasho & Solo natural forest, natural Caves (in Tocha woreda), the defense wall of the King Halala together with the recently established Chebera-Chrchura National Park, which is found between Dawro zone and Konta Special Woreda) make the zone one of the top most potential area for tourism development in the region..

The CCNP is the best wilderness area in the country specially to see the globally threatened African Elephant. Besides the verities of wildlife resources (mammals, Birds) recorded in the park, it has also unique and dramatic natural landscape (rugged, undulating to rolling plains) which is highly eye-catching and always evergreen. A number of attractions available within this wonderful park, Riverine Forest, Mountain Forest, Ground water forest, different perennial rivers including the Omo river(one of the largest river in the country), savannah grassland, wooded grassland, rivers, different hot & cold

## **Bureau of Culture and Tourism Website Compiled Information by Girma Timer**

springs, are among others that could potentially attract many national and foreign tourists as well as researchers..

**Dawro Cultural Dance:** One of the fascinating attractions of the Dawro people is their cultural dance and the local musical instruments called flute. The Cultural dance is common during various festivals like Maskel..

**Market:** The most interesting market in Dawro Zone include: Mare (Sunday) the largest market, Tercha ( Thursday), Waka (Saturday ), Tocha ( Saturday), Eiserabale(Saturday )

**Place to stay:** tourists need to come to the park with their own tent and ration or cooker. There are two suitable camping sites in the park and visitor can use the sites for tenting. Knane Motel, Eingidoch Hotel, and Tarqegn Hotel provide different services for tourists.. (Click here for accommodations & hotels lists & information).

Visitors who come to Dawro Zone can have information about the attractions of the area from the Dawro Zone State Communication and Culture and Tourism Office found at Tercha.

### **Address**

**Dawro Zone State Communication and Culture & Tourism department**

**Po. Box**

**Telephone: 0473450192**

**Fax**

**Tercha**

## **Western Zone (Mizan, Masha, Bonga, Ameya)**

### **13. Mizan**

Mizan, the administration center of Bench-Maji Zone, is located 800km south west of Ethiopia from Addis Ababa along Addis-Jima road and 1050kms from Hawassa, the capital of the Regional State. It is one of the oldest towns in the region but needs great attention for its development by encouraging investments in the area.

Amharic is the official language of the Benchi-Maji Zone. There are different nationalities in the zone living harmoniously respecting one another with good understanding. These include: Dizi, Surma, Shekicho, Sheko, Keficho, Amhara, Oromo and Guraghe and the first three are earlier settlers. These people do have their own culture, language, norm, and life styles. The people in the Zone economically depend on agricultural products including; Coffee, vegetables, Enset (root plant), fruits (orange, banana, avocados, mango, jackfruits...), spices of different types (Ginger, pulses) and cereal crops and animal

## **Bureau of Culture and Tourism Website Compiled Information by Girma Timer**

husbandry. There are also exclusively pastorals in the lowland area the Surma people. The Surma people are known for their lip plate like Murssi.



Surma couple, Bench man and Dizi people

Apart from the untouched native cultural and natural tourism attractions, the area is potential for rural Agro tourism development similar to the nearby Kafa and Sheka Zones. Some of the attractions of Benchi Maji Zone: Omo National Park (it is one of the highly biologically diverse wildernesses in Africa and managed by Federal Wildlife Conservation Authority), the beautiful Adicaus Rain forest., Adicus area Bridges of God, Genta Hot Spring (Guraferda Woreda), Uluqa holly hot and cold springs, Aaku & Tum waterfalls(Maji), Red color water fall( Shkobench) Sala cave holy water(Sai kebele), Diabtan cave (Benchi- Ginci Kebele), Bani Cave(Meenit) and Geltin Stelae(Bench), are some of the zone attraction among others. The attraction in western parts of the region extremely rich but it is the list to be visited by any types of tourist due to various reasons including poor infrastructure (road) and promotion. The area is also not very well exploited in terms of ecological, sociological and other filed of research which is very important to have the knowledge of the area and to undertake proper planning and management.

**Place to Stay and eat:** Salai-Zemilinium hotel, family hotel, Eiden hotel, Fitsum hotel, (Click here for accommodations & hotels lists & information)

Visitors who come to Benchi-Maji Zone can have information about the attractions of the Zone from the Benchi-Maji Zone State Communication and Culture and Tourism Office found at Mizan.

### **Address**

**Bench-Maji Zone State Communication and Culture & Tourism department**

**Telephone: 0473350640/ 0473350075**

**Mizan**



## **14.Masha & Tepi**

Masha, the administration center of Sheka Zone, is located 676km south west of Ethiopia from Addis Ababa along Addis-Jima road and 950kms from Hawassa, the capital of the Regional State. The Zone has two town administrations namely, Teppi & Masha which consists of 57 rural and 6 urban kebel( the smallest administrative unit). Amharic is the official language of the Zone. There are different nation nationalities in the zone living harmoniously respecting one another with good understanding. These includes: Shekicho, Sheko, Megzenger , Keficho, Amhara, Oromo and Guraghe and the first three are earlier settlers. These people do have their own culture, language, norm and life styles in which the Shekich & Sheko omotic origin and Megzengere Nilotic. The people in the Zone economically depend on agricultural products including; coffee, vegetables, Enset (root plant), fruits (orange, banana, avocados, mango, jackfruits...), spices of different types (Ginger, pulses) and cereal crops and animal husbandry. Apart from the untouched native people cultural attractions, the area is potential for rural Agro tourism development any where in the world.



Mezenger (left) and Shekicho people dressing style

**Place to Stay and eat:** Atsedu hotel, Tigist hotel, Alem hotel, Andinet hotel (found in Teppi Town)  
(Click here for accommodations & hotels lists & information)

Visitors who come to Sheka Zone can have information about the attractions of the Zone from the Sheka Zone State Communication and Culture and Tourism Office found at Masha.

**Address**

**Sheka State Communication and Culture & Tourism department**

**Po. Box**

**Telephone:0475580322/ 0475580209**

**Masha**

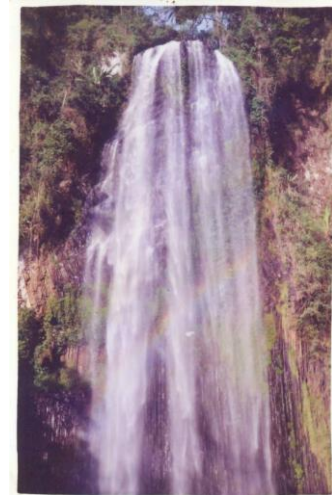


## **15. Bonga**

Bonga, the capital of Kaffa Zone, is located 450km from Addis Ababa and 722km from Hawassa, via Jima. Bonga is one of the developing towns in the region serving as an administrative center for 10 Woredas of the Kaffa Zone.

The status of the town indicates much need to be done in terms of development to satisfy the needs of tourists. At present, the area gets great attention for development (infrastructure) as other parts of the region. The area (all the 10 Woredas) has automatic telephone services and most of the rural Kebele have wireless telephone services.

The area is extremely rich in cultural, historical, and natural attractions but it is the list visited in the country. Its unique Cultural and historical heritages, pleasant climate, rich floral and fauna and the hospitable people puts the area among the leading potential tourist destination in the country.. Moreover, among water falls & spring waters the Barta, Ellelo, Adiyio falls, the Dadiben and Gora Hot spring, the ancient Andracha Medahnialelem Church, the Tongolla Mosque, the Gurguto natural Bridge, Makiara: the place where coffee Arabica was born are some of the tourist attraction site in the Zone. Like other Nations. Nationalities and Peoples of the Region the Kafa people has their own culture of ceremonial celebration (Maskal), age cycle(Birth, circumcision, Marriage, Mourning), dressing, music, dancing which can attract many national & Domestic tourist. The Bonga transitional Museum displays the various historical and cultural assets of the zone.



**The ancient Andracha Medahnialelem Church and Barta Waterfall**

**Market:** The most interesting market in Kaffa Zone include: Bonga (Saturday), Gojeb (Sunday), Wushwush(Sunday), Gimebo(Monday)

## **Bureau of Culture and Tourism Website Compiled Information by Girma Timer**

**Place to Stay and eat:** Batiologe National hotel, Misrak hotel (Click here for accommodations & hotels lists & information)

Visitors who come to Kaffa Zone can have information about the attractions of the Zone from the Kafa Zone State Communication and Culture and Tourism Office found at Bonga.

### **Address**

**Kaffa Zone State Communication and Culture & Tourism department**

**Po. Box**

**Telephone: 0473310165**

**Bonga**

## **16. Ameya**

**Ameya**, the capital of Konta Special Woreda, is located 445km from Addis Ababa via Jima or 642km travel from Addis Ababa through Shashemene and Sodo. Amaya is an ancient town established years before Addis Ababa. However, the status of the town indicates a lot to do to develop the town. The Amaya town serves as a base to visit the cultural traditions of the different nationalities living in the Konta Special woreda. There are four nationalities: Tsersa, Bacha, Manja, and Dogale that have their own culture, language, norm, and lifestyle, within the Konta. Others like Amhara, Wolaita, Hadia, Dawro, and Kafa came to the area and currently living respecting one another intermingled with kontas.



Konta Horse rider near Amaya town

### **Bureau of Culture and Tourism Website Compiled Information by Girma Timer**

Apart from the living cultural heritages of Konta people, the area have rich biological diversity. The recently established Chebera-Chrchura National Park is found between Konta Special Woreda and Dawro zone. The park is the best wilderness area in the country specially to see the globally threatened African Elephant. Besides the verities of wildlife resources (mammals, Birds) recorded in the park, it has also unique and dramatic natural landscape (rugged, undulating to rolling plains) which is highly eye-catching and always evergreen. A number of attractions available within this wonderful park, Riverine Forest, Mountain Forest, Ground water forest, different perennial rivers including the Omo river(one of the largest river in the country), savannah grassland, wooded grassland, Rivers, different hot & cold springs, are among others that could attract many national and foreign tourists.



Konta women cultural dressing style

**Market:** The most interesting market in Konta Special Woreda include: Ameya (Saturday), Chida (Thursday),

**Place to stay:** tourists need to come to the park with their own tent and ration or cooker. There are two suitable camping sites in the park and visitor can use the sites for tenting. There are some available hotels and restaurants in Amaya and Chida (Second town in Konta). (Click here for accommodations & hotels lists & information).

Visitors who come to Konta Special Woreda can have information about the attractions of the area from the Konta Special Woreda State Communication and Culture and Tourism Office found Amaya.

#### **Address**

**Konta Special Woreda State Communication and Culture & Tourism department**

**Telephone:0472270004/0472270010**

**Ameya**



## **17.Fofa**

**Fofa**, the administrative center of Yem Special Woreda, is located 277km from Addis Ababa and 27km from the highway of Addis Ababa- Jima.. The Special Woreda is rich in cultural, historic, and natural attractions..

**Caves:** there are more than 50 ancient caves which are filled with human bed, seats & shelves made from drilled wall, ancient cemeteries, **Zofkar** & **Mellissa** stelae sites, Wema-hot spring ( the water spring out from a rock and it flows from the rocky mountains(like falls), it is used as medicine for all sorts of disease by local people), beautiful landscape (chained Mountains), historical sites( the Angary ancient palace, defending ditches, traditional foods, various social practices(traditional court or arbitration), marriage types, and traditional knowledge(medicine, Calendar), traditional musical instruments, ceremonies (Maskal, holiday,). There are collections of ancient traditional equipments in the Special Woreda Culture & tourism Office used as a display.



Yem people cultural dancing dressing style

**Market:** The most interesting market in Yem Special Woreda include: Fofa (Tuesday), Deri (Saturday)

Tourist can get information about the attractions from Special Woreda from State Communication and Culture and Tourism office at Fofa,

### **Address**

**Yem Special Woreda State Communication and Culture & Tourism department**

### **Po. Box**

**Telephone:0474640099/ 0474640154**

### **Fofa**



**Southern Zone (Soyama, Kele, Fofa, Gedole, Laska)**

**18.Soyama**

**Soyama**, the capital of Burji Special Woreda, is located 240km from Hawassa town, 60km from Kele and 70km from Konso (Karart). The town is among the growing towns found in the Region. Much need to be done to develop the town and give proper services for traveler. The area is rich in cultural and natural attractions. One of the paleo-anthropological & anthropological sites( which is unstudied Miocene period formation), Segen Wildlife Controlled Hunting Areas and rich cultural practices of the Burji people are among others that potentially attract many national and international tourists. Specially, **the Burji Cultural Dance** exercised during the circumcision time is one of the most attractive events for many visitors.

**Market:** The most interesting market in Burji Special Woreda includes Soyama (Saturday)



Burji Girl

**Address**

**Burji Special Woreda State Communication and Culture & Tourism department**

**Po. Box**

**Telephone:0463312123/ 0463313656**

**Soyama**

## 19.Kele

**Kele**, the capital of Amaro Special Woreda, is located 180km from Hawassa town and 90km from Dilla town to the south. Kele is an old town established in 1934. The town is a growing town, with access for clean water, better telephone service and 24hours electricity power supply, schools of different level( from elementary to preparatory), health center and different small-scale industry. Oil stations, market centers and other investment areas are ready for investors who are willing to invest their resources in the locality.



Kore elders

The people depend on mixed agriculture both live stock and crop production. Enset (the root like plant of false banana) is the main product and staple food for the people. Amaro is known for its quality Bulla (food extracted from Enset plant). Amaro Bula is as white as milk and quality one and have a great demand in the market. In addition, in the different agro ecology of the Special Woreda wheat, barely, peas, beans and cabbage, maize, teff, sorghum, cassava, banana, avocados, lemon, caster bean, sugar cane, oil seeds and chat produced. Amaro coffee is the major supply to the market (have good taste, flavor and quality) these indicates that Amaro Special Woreda is have conducive environment especially for Agro-tourism development. Tourist who has the interest to visit rural cultural agricultural practices need to come to Amaro Special woreda. The Special Woreda have diverse cultural, historic and natural attractions. The chained Amaro Mountains, different culturally protected forest, different waterfalls, hot springs, part of lake Cahmo and Nec-hSar national Park, the people traditional practices(handicraft, music & song) holiday and rituals ceremonies, the ancient Yero MedahnialeM Churches are some of the attractions among other in the special Woreda. .

## **Bureau of Culture and Tourism Website Compiled Information by Girma Timer**

Investments on tourist service rendering facilities would be highly profitable and important, as there are no available hotels and restaurants in Kele town except some smaller hotels providing traditional food for locals and bed services. The Special Woreda admin has arranged land for investor in the town: 22332 m<sup>2</sup>.of land for hotel investment, land for two oil stations, land for shop and market center,

**Market:** The most interesting market in Amaro Special Woreda include: Kelel (Saturday)

Visitors who come to Amaro Special Woreda can have information about the attractions of the area from the Amaro Special Woreda State Communication and Culture and Tourism Office found at Kele.

### **Address**

**Amaro Special Woreda State Communication and Culture & Tourism department**

**Po. Box**

**Telephone:0463312091/ 0463312114**

**Kele**

## **20.Gidole**

Gidole, the capital of Derashe special woreda, is located 330km from Hawassa town and 55km from ArbaMinch town to the south. Gidole is an ancient city established half a century ago, had been served as capital of the then Gamo-Gofa Province and Gardula Awraja as well. The Gidole town serves as a base to visit the cultural traditions of the different nationalities living in the Derashe Special Woreda. .

The Derashe Special Woreda holds five nationalities found in between Woito and Segon Rivers. These include Derashe (largest population), Dobase, Kussume, Moseye, Mashole. Although these different ethnic groups live integrated to one another, they have their own language, values, and culture. The language groups of these ethnic groups are Cushitic.



## **Bureau of Culture and Tourism Website Compiled Information by Girma Timer**

### **Derashe Cultural Dressing style**

Currently, Asphalt road running from Arba-Minch to Jinka through Gidole town is under construction, making the town one of the tourist destinations. The special Woreda has different attractions: Natural (forest, hot springs) and living Cultural assets of the five Nationalities.

Investments on tourist service rendering facilities would be highly profitable and important as there is no available hotels and restaurants in Gidole town except a few coffee and teahouses.

**Market:** The most interesting market in Derashe Special Woreda include: Gidole (Tuesday), Visitors who come to Derashe Special Woreda can have information about the attractions of the area from the Derashe Special Woreda State Communication and Culture and Tourism Office found at Gidole.

### **Address**

**Derashe Special Woreda State Communication and Culture & Tourism department**

**Po. Box**

**Telephone::046774005/ 0467740010**

**Gidole**

### **21. Laska**

**Laska**, the administrative center of Basketo Special Wereda, is located 585km from Addis Ababa and 200km from Sodo town via Maze National Park & Sawla town (administrative center of Gofa district in Gamo-Gofa Zone). Basketo Special Woreda is rich in cultural, historic and natural attractions. It is surrounded by rugged topography and mountains covered with dense forest and rich in wildlife resources (mammals, birds). Some of the common wild animals known in the area include African buffalo, warthog, bush pig, lion, and cheetah and species of primates.



**Basketo Cultural Dance**

There are different cold & hot springs, which are important as medicine for all sorts of disease by local people. Beautiful landscape which is rugged and Mountainous, traditional foods, various social



**Bureau of Culture and Tourism Website Compiled Information by Girma Timer**

practices like traditional court or arbitration, marriage types, and traditional knowledge (medicine), traditional musical instruments, ceremonies (Maskal and other Holidays,) among others are features of the Sp.Woreda.

**Market:** The most interesting market in Basketo Special Woreda include: Laska ( Monday), Tourist can get information about the attractions from Special Woreda Tourist can get information from Derashe special woreda State Communication, Culture, and Tourism office at Laska,

**Address**

**Basketo Special Woreda State Communication and Culture & Tourism department**

**Po. Box**

**Telephone:0468840536**

**Laska**

**5.3. Tourist Travel Circuits (Maps)**

**Fig: Zonal Map of Southern, Nations, Nationalities & Peoples Regional State**

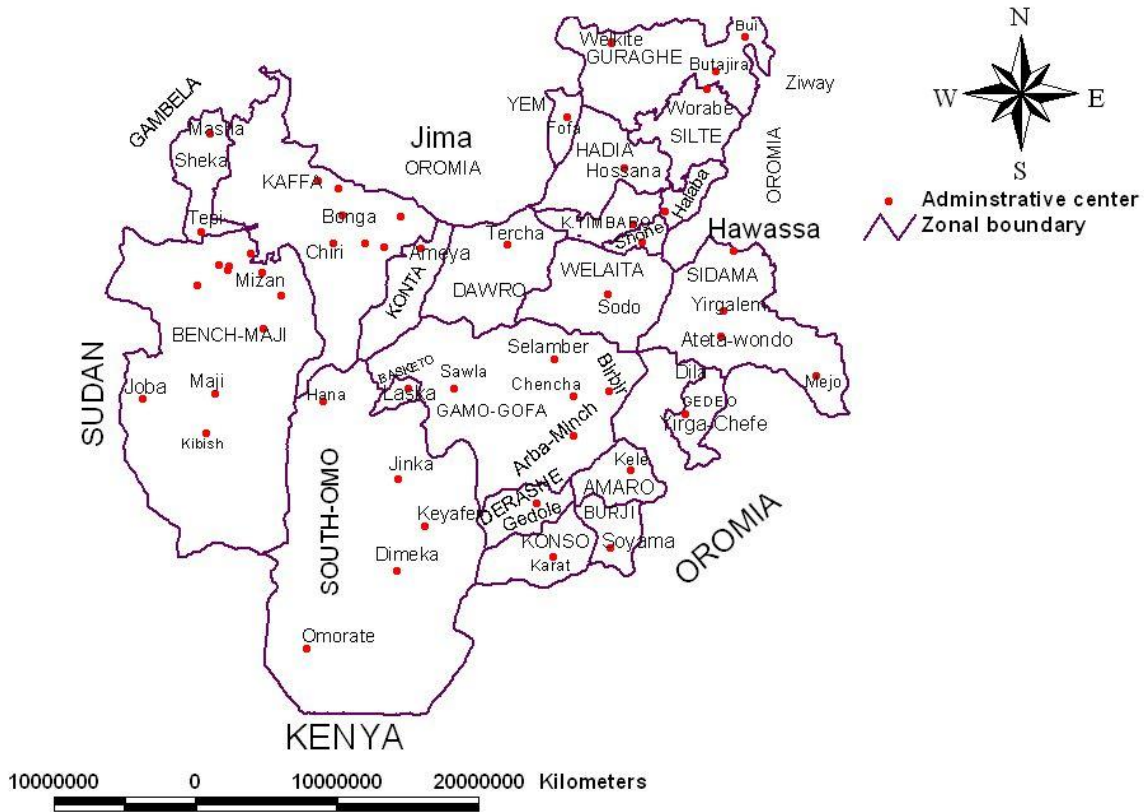


Fig: Travel routes to the different destinations in SNNPRS

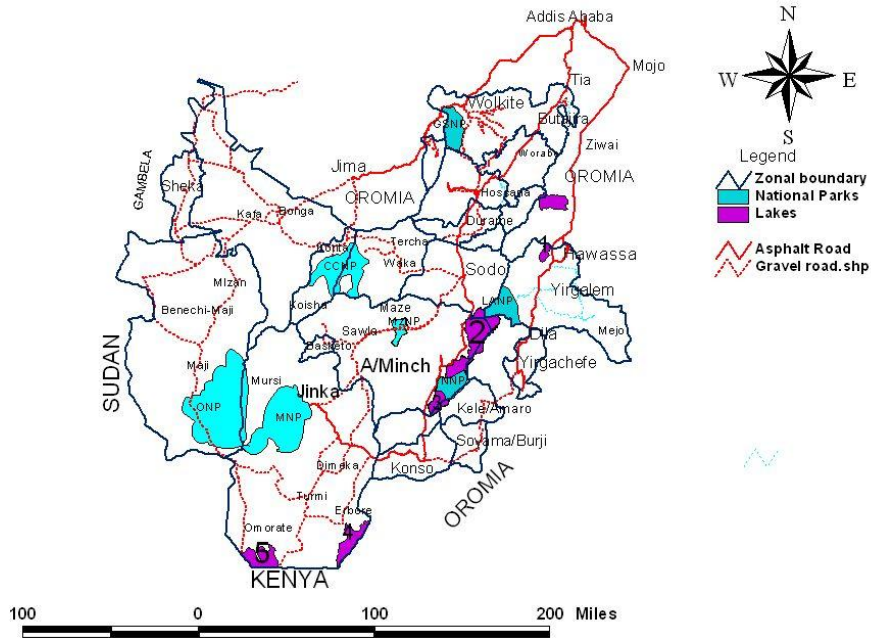


Fig.3. Attractions of SNNPRS on the regional setting indicated by Numbers

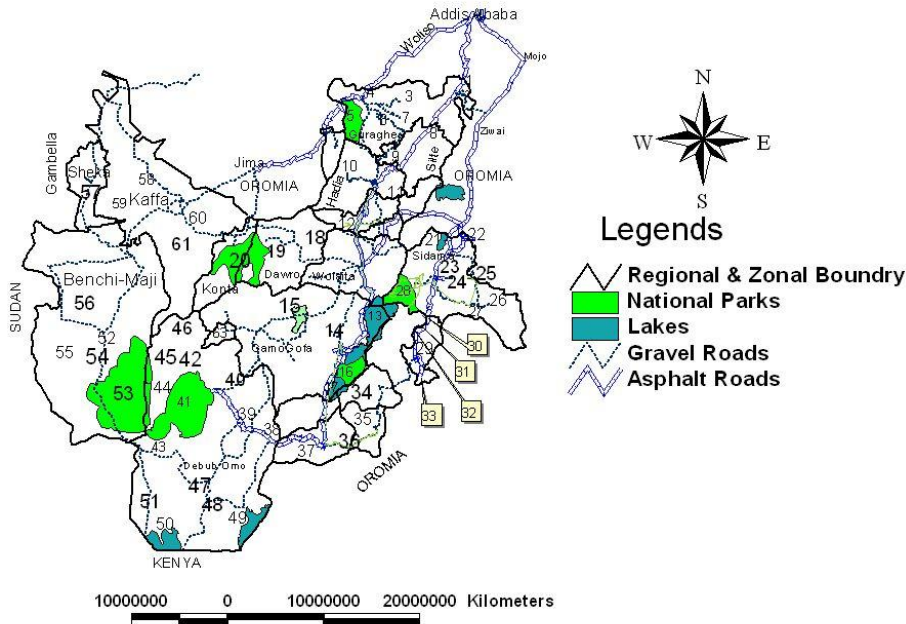


Table 1. Keys for Number indicated in fig 3 of attractions map above

No.	Name	No.	Name	No.	Name
1	Tia Stele	22	Wondo genet Hot spring	43	Murule Controlled Hunting Area
2	Midrekebd Monastery	23	Gidabo Hot spring /Arggash lodge	44	Tama Wildlife Reserve
3	Muher-Eyesus Monastery	24	Wonsho worship site	45	Haile wuha/Murssi people/
4	Aberaet Mosque	25	Garamba mountain community wildlife area	46	Bodi and Deme people
5	Gibe Sheleko National Park	26	Bonora water fall	47	Dimeka town/Hamer people
6	Community Wildlife Area	27	Logita waterfall	48	Turmi Town/Hamer people
7	Forest	28	Loka Abaya National Park	49	Chelbi Wildlife Reserve/ Erbore people
8	Haro-Shetan	29	Gedeo cultural landscape & the people	50	Lake Rudolf/ Dassench people
9	Eimezar Caves	30	ChuChu Gebreil	51	Lower Omo Paleo-anthropological site
10	Waterfalls	31	Tutifola stele	52	Dizi, Surma Shekicho people
11	Boye-wetland	32	Tutit Stele	53	Omo National Park
12	Ajora water fall	33	Socorro Sodo Stele	54	Adicaus cloud Rain forest
13	Lake Abaya	34	Amaro Chained Mountain	55	Genta & Uluqa Hot Spring
14	Chencha/Dorze Handicrafts	35	Segen Controlled hunting Area	56	Aaku & Tum waterfalls
15	Maze National Park	36	Konso/Burji anthropological site	57	Shekicho, Sheko, Megzenger people
16	Nech-Sar National Park	37	Konso people /Konso Cultural land escape	58	Barta, Ellelo, Adiyo water falls,
17	Lake Chamo	38	Weito village	59	Dadiben and Gora Hot spring,
18	King Halala wall	39	Key Afer town/Bena people	60	Andracha Medahnialem Church,
19	Dawro Forest	40	Ari people	61	Tongolla Mosque
20	Chebera-Churchura National Park	41	Mago National Park/ mursi, Bena, Karo, Hamer, nagngatom, Mugiji peoles	62	Makiara (Orgin of coffee Arabica)
21	Lake Hawassa	42	Wolishet Sala CHA	53	Basketo people

#### **5.4. Investment Opportunities**

The main objective of the economic policy of the country is geared towards attaining sustainable economic growth through the direct participation of the private sector. Accordingly, the Region Bureau of Culture and Tourism has encouraged private investors to develop facilities and infrastructure around tourist destinations of the Region. In this case, the Region Investment Expansion Core Process may let sites for the construction of lodges, hotels, restaurants and other similar investments around attraction sites, based on the recommendation of the Bureau of Culture and Tourism. The bureau has also encouraged the private sector to develop tourist facilities within in wildlife conservation areas managed by the Regional State to facilitate tourism activities and secure financial returns from the protected areas. In this case, the Region TPDUP and each of the wildlife conservation areas management identify the proper sites and may provide the sites to investor, in accordance to the wildlife act (Regulation) No---/2001, for the erection of hotels or other accommodation facilities in the conservation area. Establishment and operation of such facilities will be done in a manner not detrimental to the proper wildlife management.

There are many Investments opportunities in and around attraction sites of the region different Zones and Special Weredas related with services rendering facilities and infrastructure development. As mentioned above, in the wildlife protected area management planning process, the Region TPDUP consider identifying potential sites for the development of quality eco-friendly tourist accommodation facilities.

Currently, the Region has strong intention to form partnership with potential private investors to develop these sites and secure additional income from the operation for an agreed period.

Accordingly, the Region would like to invite interested investor to be involved in the development of tourist accommodation in the Region Wildlife Protected Area. These may include lodges, Eco-lodges, Luxury tented camps, Cottages, Motels, Camp Site, and Bungalows.

Nowadays, the Regional state is doing its level best to enhance the flow of tourists and encourage local and foreign direct investment. The Regional tourism investment potentials has been studied & consolidated, Regional Guideline for the developmental investors in the wild life protected areas has been prepared, and Regional Tourism policy & strategy documents have been developed. Different incentive mechanisms have been identified to be offered to all investors involved in tourism related investments.



## Bureau of Culture and Tourism Website Compiled Information by Girma Timer

### Some of these incentives include:

- Conducive investment Regulations & Directives has been formulated
- Land for tourism investment is demarcated in Debube Omo, Gamo-Gofa, Bench-Maji, Gedeo, Wolyita, Sidama, and Gurage zones.
- Land is exempted from rent & tax for about three year
- .Imported vehicle /one pick up/ & other related machineries are exempted from tax.
- Land rent is minimum/.01 birr/sq.m or 120USD /ha annually/
- Efficient service delivery system is put in place
- Guidelines for concessionaires are formulated for who intend to put up tourist facilities and operate in the regionally administered National Parks & wild life reserves.

### 5.5. Visitors Flow and Income

In the recent years, the tourism sector in SNNPRS is encouraging and shows a promising performance. The great promotion made for the Ethiopian millennium had stimulated many Ethiopian Diasporas and foreigner to visit the country in 2008. Tourism earning in the region increases by 46.6 % from 12,739995 Birr in 2007 to 23, 852410 Birr in 2008 (almost 50% increment). Although, the rise of fuel and commodity prices, global financial inflation and exchange rate fluctuation have impacted negatively the sector, the number of international arrivals to the region shows increment from the previous year. Similarly the number of visitors to the wildlife areas(National Parks) and controlled hunting areas increase from 7558 in 2007 to 22584 in 2008 representing a 66.5 % increase.

Although tourist arrival has decreased by 15.4 % in 2009 from that of 2008, tourism earning has increased by 9.6 % in 2009 but. (See table below).

Table 1. Tourist flow in the region Wildlife Protected Areas ( Mago, Omo & Azo ranch)

Year		National	Foreigner	Total
1994		5944	3810	9754
1995		8926	4970	13896
1996		13259	5994	19253
1997		15582	5030	20612
1998		13772	9245	23017
1999		12766	7558	20324
2000		30698	22584	53282
2001		21219	20285	41504

Table 2. Tourists (Domestic & foreign) arrival and income generated in SNNPR

Year	Nationals	Foreigner	Total	Revenue in
------	-----------	-----------	-------	------------

**Bureau of Culture and Tourism Website Compiled Information by Girma Timer**

E.C.				Birr
1992	48740	12634	61374	5122769
1993	77886	10126	88012	7571518
1994	102270	20000	122270	7002006
1995	101000	22000	123000	7007116
1996	102135	41871	144006	6424337
1997	94358	29395	123753	8663100
1998	200000	38814	238814	12262000
1999	338915	32215	271130	12739995
2000	336185	57347	393532	23852410
2001	257489	75375	332863	26379639.82

Table 3. Tourists flow and income generated by destinations in 2008/9 G.C.(2001 E.C.)

se.No	Destinations/Name/	Visitors in Number			Income	Remarks
		Nationals	Foreigners	Total		
1	Arba-Minch Crocodile Ranch	15328	1298	16626	282183.84	hatchling & Croc skins
2	Nech-Sar National Park	9398	8909	18306	990000	
3	Mago National Park	100	5339	5439	810445	
6	Omo National Park	73	72	145	11800	
7	Murule Controlled Hunting Area	0	15	15	503804.46	
8	Wolishet Sala Controlled hunting Area	0	0	0	32810.09	
9	Tiya Stele	835	963	1798	40073	
10	Tutifola Stele	281	318	599	15544	
11	Hawasa town	34921	6541	41463	5758948	
12	Kafa Zone	25488	269	25757	785694	
13	HadiYa Zone	46781	481	47262	2334574	
14	Wolaita	52167	3102	55269	1498459	
15	Debub Omo Zone	11910	11757	23667	2180117.23	
16	Konso	514	3991	4498	242858	
17	Sidama (Hawassa+ Yirgalem)	15996	7853	23849	5585666.40	
18	Silte(Worabe)	1192	38	1230	203428	
19	Gamo-Gofa(ArbaMinch+Sawla)	42510	24430	66940	5103234.7	
	Total				26379639.72	26346829.2

## **5.6. Community Participation**

The Region TPDUP make at most effort to benefit local communities by providing a wide range of job opportunities (permanent & temporary) in the wildlife conservation area operating in the region.

The Region is actively engaged in the social and economic welfare of people who are living around the wildlife protected areas by making the wildlife areas the local engine of economic growth and development, and ensure that local communities benefit directly in the opportunities created by wildlife protected area management. In particular ensuring local communities direct participation and acquiring benefit from the wildlife conservation activities.

To this end: the SNNPRS is the first Region in the country to declare a regulation, on the revenue generated from wildlife resources, and realize community benefit sharing scheme. This legal frame work has ensured the legal rights of local communities to acquire their share from the tourist revenue generated from the wildlife protected areas. Owing to these conditions, Local communities of many wildlife protected areas have started to protect their wildlife resources and control illegal activities prevailing in their areas. According to, the Region tourist attraction sites **Revenue Utilization Regulation No---/2000**, the total annual revenue generated from each wildlife conservation areas (National Park, Controlled Hunting Areas) will be divided/shared to the respective stakeholders at the end of every year. Accordingly, 35 % (of the total revenue) goes to the local communities living around the attractions, 35% to the development of the conservation areas (the attraction sites) 15% for the respective Woreda /district/, and 10% for Zonal admin and 10% to the Region TPDUP..

The region TPDUP would aware the total amount of annual revenue collected and the share breakdown for all stakeholders (local communities, zones and Wereda/district) at the end of each budget year. The Region TPDUP would release the financial share to each of the stakeholders based on their submitted development project proposal to the region TPDUP. The local communities with the support of their respective zone and Woreda admin bodies as well as expertise would identify development ideas and prepare project proposal and submit to the region wildlife department so as to get their annual financial share of wildlife revenue. The region wildlife department experts are responsible to supervise the implementations of the projects and provide technical assistance for the Zonal, Weredas and local community

## VI. CONTACT US

*The Southern Nations Nationalities and peoples  
Regional State  
Culture and Tourism Bureau*

*Hawassa*

*Ethiopia*

*Tel. 251-046-221-04-80/ 220-84-90/220-11-74*

*Fax 251-046-220-51-97*

*website email: south\_tourism@yahoo.com*



## **VII. PARTNERS**

## **VIII. GALLERY**

**Gallery of the Website includes Photograph of the followings:**

- 1. People(56 Nations Nationalities)**
- 2. Lower Omo people**
- 3. Birds**
- 4. Mammals**
- 5. Water bodies (rivers, lakes, waterfalls..)**
- 6. Landscape (beauties including forest, mountains, lakes)**
- 7. Historical heritages**
- 8. Cultural House**